

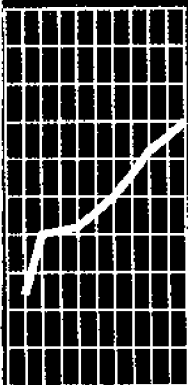


August 1997

EMBARGO: 11.30 AM (CANBERRA TIME) TUES 28 OCT 1997

Labour Force

New South Wales and Australian Capital Territory



NOTES

This publication contains estimates of the civilian labour force in New South Wales (NSW) and the Australian Capital Territory (ACT) derived from the Labour Force Survey (LFS) component of the Monthly Population Survey, which is conducted on a sample basis throughout Australia. Explanatory notes for data contained in this publication can be found on page 47.

Care should be taken in the interpretation of month-to-month movements in the estimates. Survey estimates are subject to sampling and non-sampling variability as explained in the technical note on data reliability on page 59.

.....

CHANGES THIS ISSUE

Occupation time series: Table 9 which reports employment by occupation in NSW now includes data for 1 year ago in addition to data for the latest period.

Annual averages for industry and occupation data in the ACT: Table 24 which reports employment by industry now shows annual average data for the year ending with the latest period and the same period a year ago and table 25 shows annual average employment by occupation for the year ending with the latest period.

Graphs: A new time series graph showing the trend estimate of unemployed persons for NSW has been added to the summary of findings and a graph of annual average employment by industry for the ACT now appears below table 25. In addition, the graph opposite table 9 now shows annual change in employment by occupation group.

.....

INQUIRIES

For information about other ABS statistics and services, please refer to the back of this publication.

For information about statistics in this publication and the availability of related unpublished statistics, contact the following—

ABS NSW office — Information Consultancy on Sydney (02) 9268 4493 or
Peter Jones on Sydney (02) 9268 4495

ABS ACT office — Tim Power on Canberra (02) 6207 0244

Gregory W. Bray
Regional Director
New South Wales

CONTENTS

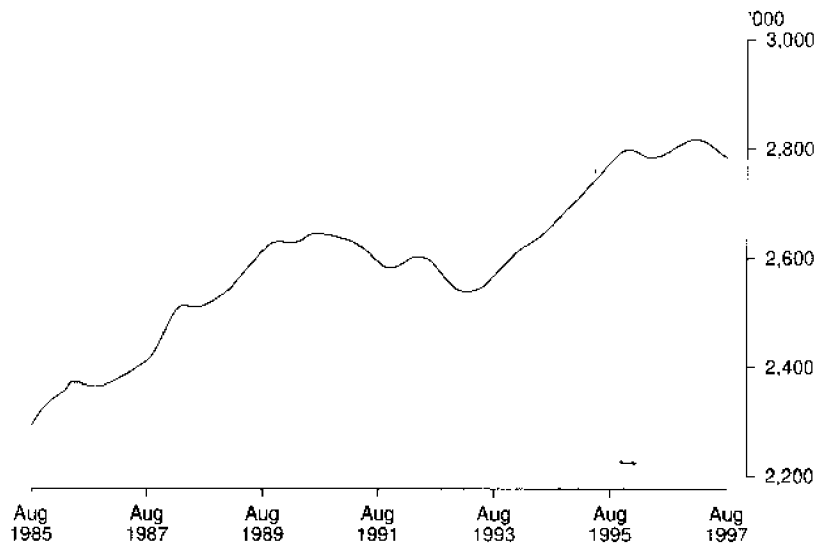
	Page
SUMMARY OF FINDINGS	
New South Wales	4
Australian Capital Territory	9
LIST OF TABLES AND GRAPHS	
New South Wales	12
Australian Capital Territory	14
INFORMATION	
Explanatory notes	47
Appendix:	
Supplementary topics	52
Regions of NSW and ACT	53
Regions of NSW and ACT — maps	58
Technical note: data reliability	59
Standard errors	62

SUMMARY OF FINDINGS NSW

TREND ESTIMATES

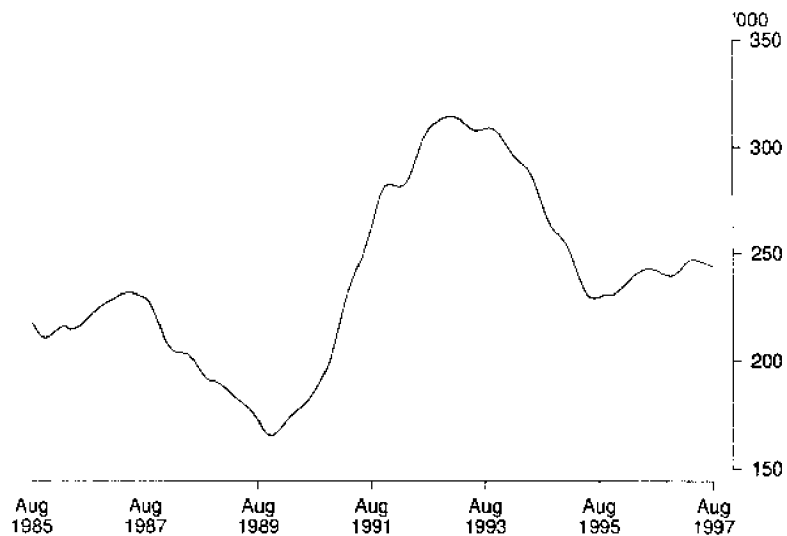
Employed persons

Trend employment in NSW fell from a peak of 2,818,000 in February 1997 to 2,784,000 in August, a decrease of 1%. This followed a period of 4 years when employment increased by 11%. Full-time employment fell from a peak of 2,159,000 in January 1997 to 2,128,000 in August.



Unemployed persons

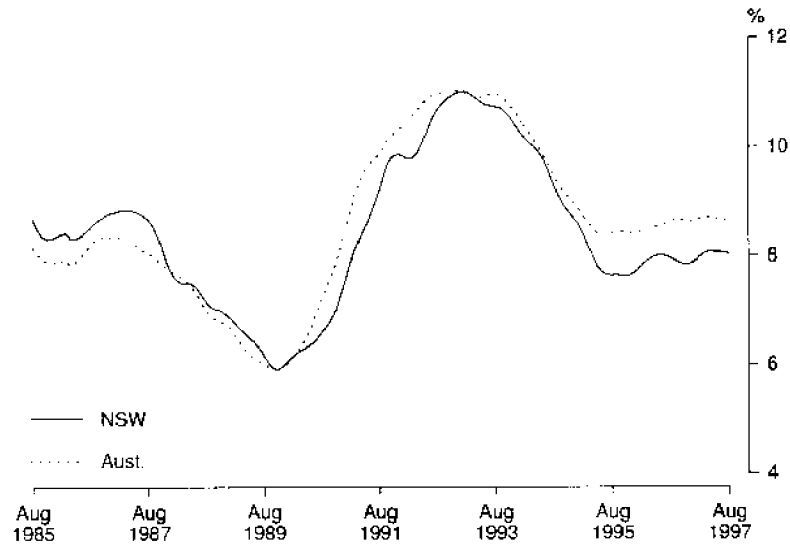
The trend estimate of unemployed persons in NSW fell slightly in the last 4 months to 244,000 in August 1997. In the last year the trend has mostly remained in the range from 240,000 to 245,000.



SUMMARY OF FINDINGS NSW *continued*

Unemployment rate

Having fallen rapidly from a peak of 11.0% in March 1993 to a low of 7.6% in November 1995, the trend unemployment rate in NSW then rose to 8.0% in April 1996 and has remained almost stationary at this level up to August 1997.



Participation rate and labour force

The trend participation rate reached a peak of 62.8% in December 1995 before falling to 62.3% in May 1996. It remained at that level until March 1997. Since then, the rate has fallen one percentage point to 61.3%. Male participation in August 1997 was 71.4% while female participation was 51.5%.

The trend labour force estimate fell about 1% in the last 6 months from a peak of 3,062,000 this February to 3,028,000 in August.

SEASONALLY ADJUSTED ESTIMATES

In August 1997, the seasonally adjusted estimate of employment in NSW was 2,768,000 compared to 2,798,000 a year earlier.

Seasonally adjusted unemployment fell from about 250,000 last August to 240,000 this August. The unemployment rate was 8.0% in August 1997 compared to 8.2% a year earlier.

SUMMARY OF FINDINGS NSW *continued*

.....

REGIONS OF NSW

While the Labour Force Survey (LFS) is designed primarily to produce reliable estimates at the national and State/Territory level, it also delivers estimates for a number of regions within States. As with national and State estimates, regional labour force estimates are subject to sampling error. Since estimates for regions are components of corresponding estimates at the State level — and are thus based on a considerably smaller sample size — they are subject to higher relative standard errors. Care should therefore be taken in interpretation of regional estimates, particularly month-to-month movements.

Sydney

In August 1997, the estimated number of people employed in the Sydney Major Statistical Region (MSR) was almost 1.8 million, about the same as a year earlier.

The unemployment rate rose from a 6-year low of 6.0% in November 1996 to 8.0% in February 1997 before falling back to 6.3% in August. The rate was 6.6% for males and 6.0% for females.

The lowest unemployment rates within Sydney MSR in August 1997 were in Hornsby-Ku-ring-gai Statistical Region (SR), Lower Northern Sydney SR and Northern Beaches SR (all with rates under 4%) while the highest rate was 13.4% in Fairfield-Liverpool SR.

The labour force participation rate for Sydney MSR was 62.4% with a rate of 71.9% for males and 53.3% for females. Rates ranged from 72.8% in Northern Beaches SR to 52.5% in Gosford-Wyong SR.

Balance of NSW

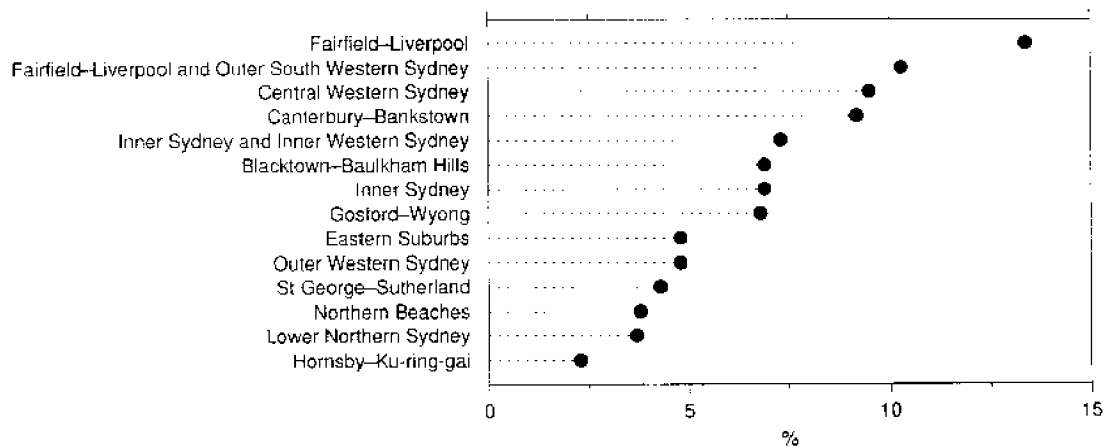
In August 1997, the estimated number of employed people in this area of NSW was 953,000.

The unemployment rate in August 1997 was 10.0%, about the same as a year earlier. The unemployment rate varied from a low of 7.9% in Murray-Murrumbidgee SR to 13.7% in the combined Richmond-Tweed and Mid-North Coast SRs.

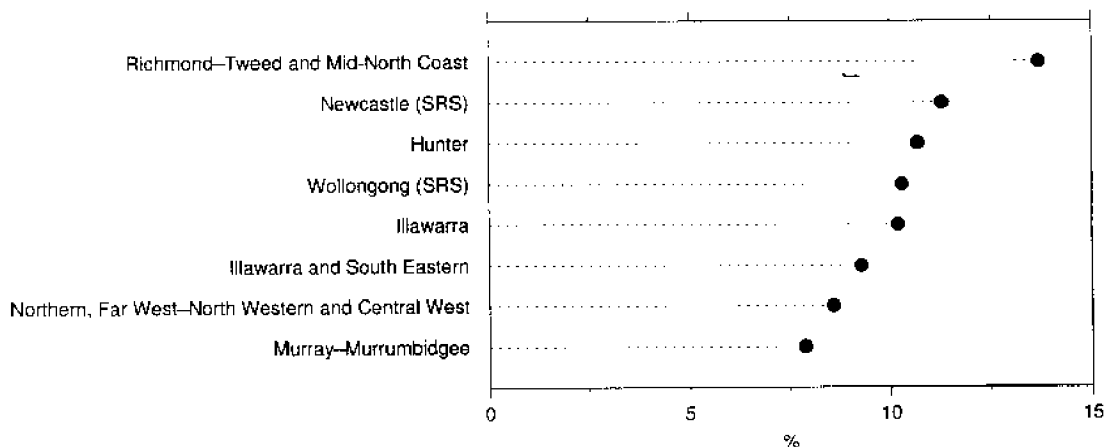
The participation rate for the Balance of NSW MSR was 56.7% in August with male participation at 67.4% and female participation at 46.4%.

SUMMARY OF FINDINGS NSW *continued*

Unemployment rate, Sydney MSR, August 1997



Unemployment rate, Balance of NSW MSR, August 1997



AGE

The year to August 1997 saw employment increase by small amounts in the age groups from 25-34 to 60-64 while it decreased in the 15-19, 20-24 and 65 and over age groups. The largest change was for 15-19 year olds where employment fell by 13%.

Part-time workers represented nearly one-quarter of all employed people in August 1997 but this proportion varied between age groups. The highest level was for 15-19 year olds with 59% and the lowest for 25-34 year olds with 18%.

The unemployment rate was highest for the 15-19 age group at 18.0%.

SUMMARY OF FINDINGS NSW *continued*

INDUSTRY AND OCCUPATION

Over the last 12 months, the largest gain in employment was in the manufacturing industry with an increase of 35,000 people while the largest decline was in retail trade with a fall of 46,000.

The main industries in August 1997, based on employment, were manufacturing with 15% of total employed and retail trade with 14%. The manufacturing industry was also the largest employer of males with 19% of employed men while both retail trade and health and community services were the largest employers of women (16% of employed women).

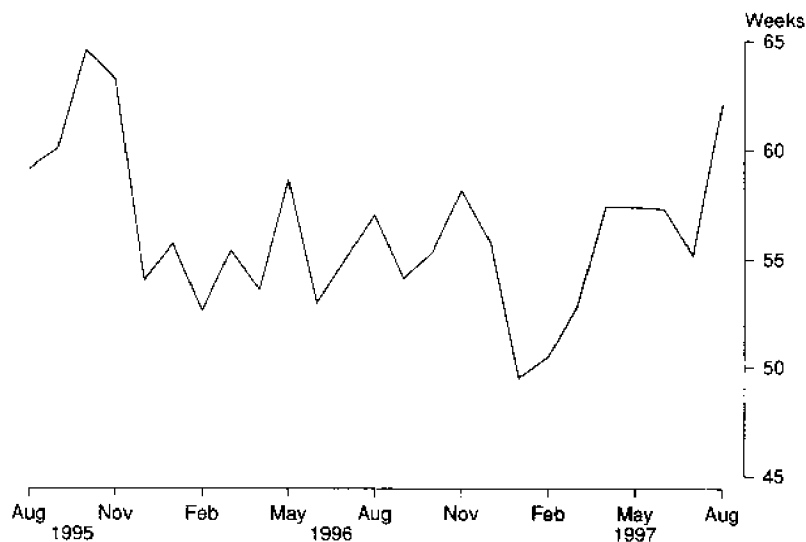
In Sydney MSR, the principal employers were in manufacturing with 15% of total employed, property and business services with 13% and retail trade with 12%. In Balance of NSW MSR the largest employment was in retail trade with 16% of the total and manufacturing with 14%.

The largest occupation groups in NSW were professionals with 19% of the total and intermediate clerical, sales and service workers with 17%.

DURATION OF UNEMPLOYMENT

In August 1997, the long-term unemployed represented one-third of all unemployed people. Average (mean) duration of unemployment in August was 62 weeks compared to 57 weeks a year earlier. The median duration of unemployment was 26 weeks this August and 22 weeks last August.

Average duration of unemployment



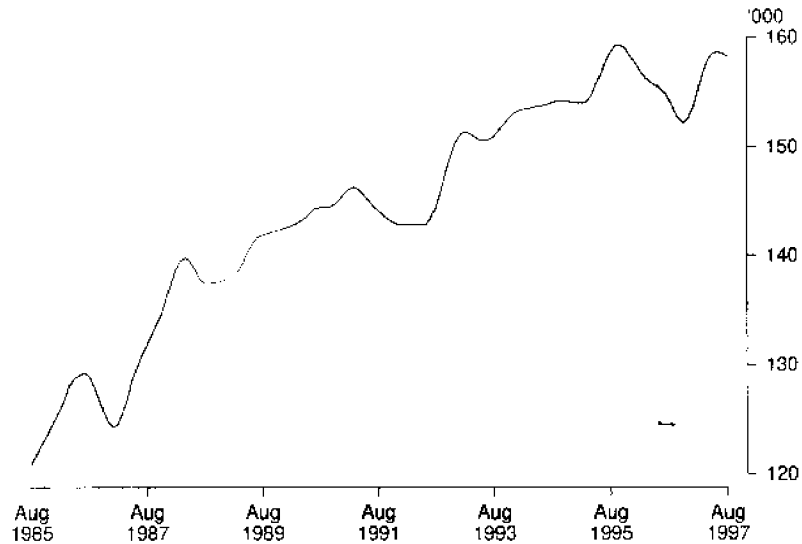
SUMMARY OF FINDINGS ACT

Note: Seasonally adjusted estimates are not available for the ACT.

TREND ESTIMATES

Employed persons

Trend employment in the ACT rose by 4% during the first half of 1997 before falling slightly to 158,000 in August. This followed a fall of about 4% in the trend during 1996. Full-time employment has increased by 5% in 1997.

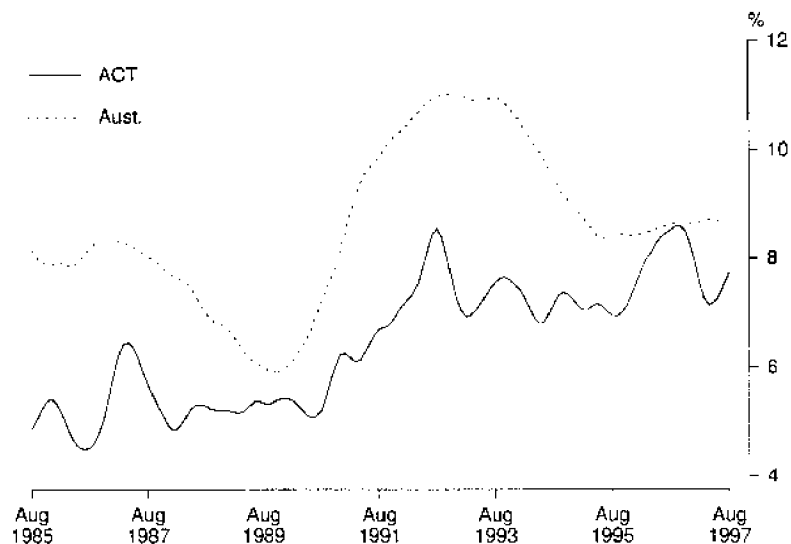


Unemployed persons

The trend estimate of the number of unemployed people in the ACT fell from a peak level of 14,400 in August–October 1996 to 12,100 in April 1997 before rising to 13,300 in August.

Unemployment rate

Following the fall from the high of 8.6% in September–October 1996 to 7.1% in April 1997, the trend unemployment rate in the ACT has risen in the last 4 months to reach 7.7% in August.



SUMMARY OF FINDINGS ACT *continued*

Participation rate and labour force

The ACT participation rate increased from a low of 71.0% in December 1996 to 73.1% in August 1997. While the male participation rate has increased throughout 1997 to reach 79.9% in August, the female rate declined slightly in the last 2 months to 66.5% following increases earlier in the year.

The labour force estimate was 172,000 in August 1997, about 2% higher than a year ago.

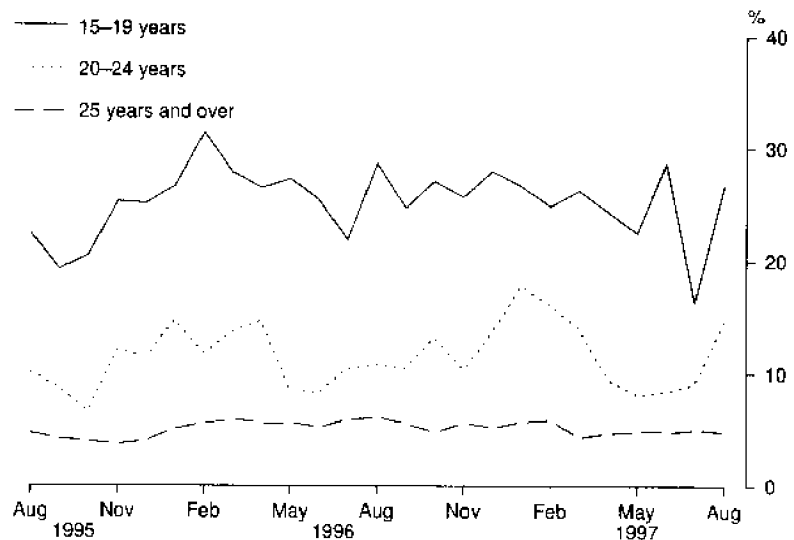
AGE

Part-time workers continued to represent about a quarter of all employed persons in the ACT but this proportion decreased with age. Over 80% of 15–19 year olds worked part-time in August compared to less than 20% of those aged 25 and over.

The unemployment rate was highest for 15–19 year olds at 26.7% and lowest for those aged 25 and over at 4.8%. Almost two-thirds of unemployed teenagers were looking for part-time work.

Average weekly hours worked ranged from 14 hours per week for teenagers to 36 hours per week for those aged 25 and over.

Unemployment rate by age



INDUSTRY AND OCCUPATION

For the year ending August 1997, the major industries in the ACT based on employment were government administration and defence which had an annual average of 26% of employed people and both retail trade and property and business services with 13% of the total.

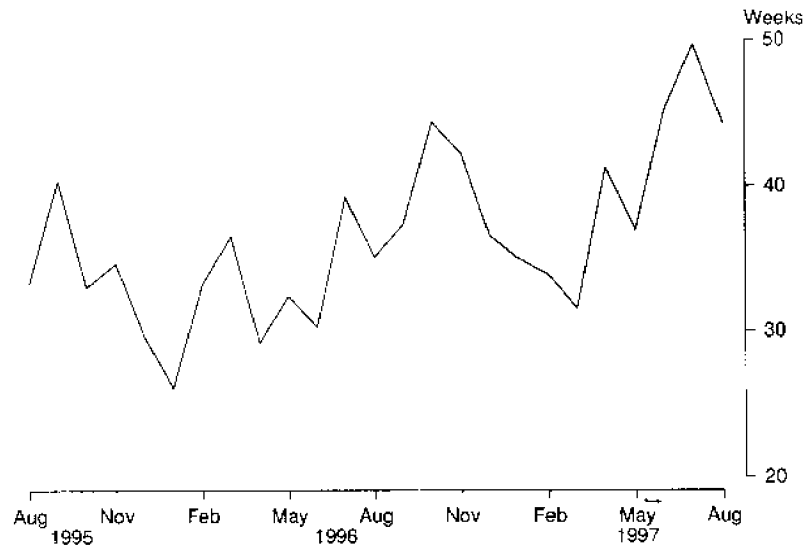
The largest occupation groups were professionals with an annual average of 24% of employed people and intermediate clerical, sales and service workers with 19%. Professionals was the largest group for males with an average of 24% of employed males and intermediate clerical, sales and service workers the largest for females with 29% of employed females.

SUMMARY OF FINDINGS ACT *continued*

DURATION OF UNEMPLOYMENT

In August 1997, the average duration of unemployment in the ACT was 44 weeks. The average ranged from 22 weeks for 15-19 year olds to 67 weeks for those aged 25 years and over.

Average duration of unemployment



LIST OF TABLES AND GRAPHS

Page

NEW SOUTH WALES

Tables

Labour force status:

1	Original series	15
2	Seasonally adjusted and trend series	16
3	Age, August 1997	18
4	Persons aged 15-24 by full-time educational attendance, August 1997	19
5	Family status, August 1997	20

Graphs

Labour force status:

Trend series, August 1985-August 1997—

Employed males	17
Employed females	17
Unemployed males	17
Unemployed females	17
Male unemployment rate	17
Female unemployment rate	17
Male participation rate	17
Female participation rate	17

Persons aged 15-19 in the labour force: Full-time attendance at school or a tertiary educational institution, August 1995-August 1997—

Employed	18
Unemployed	18

Tables

Employed persons:

6	Status in employment	20
7	Age	21
8	Industry, August 1996 and August 1997	22
9	Occupation, August 1996 and August 1997	24

Graphs

Employed persons:

Annual change in employment by age, August 1996-August 1997	21
Annual change in employment by industry division, August 1996-August 1997	23
Annual change in employment by occupation group, August 1996-August 1997	25

LIST OF TABLES AND GRAPHS *continued*

Page

Tables

Unemployed persons:

10	Age	26
11	Unemployment rate by age	26
12	Industry and occupation of last full-time job, August 1997	27
13	Duration of unemployment	28
14	Unemployment rate by birthplace and period of arrival	28
15	Duration of unemployment by age	29

Graphs

Unemployment rate:

	Unemployment rate by age, August 1995–August 1997	27
	Unemployment rate by period of arrival of overseas born, August 1997	28

Tables

Regional data:

	Labour force status—	
16	Sydney Major Statistical Region	30
17	Balance of NSW Major Statistical Region	31
	Employed persons:	
18	Industry and occupation, Sydney Major Statistical Region and Balance of NSW Major Statistical Region, August 1997	32
19	Labour force status of regions of NSW and ACT	33

LIST OF TABLES AND GRAPHS *continued*

Page

AUSTRALIAN CAPITAL TERRITORY

Tables

	Labour force status:	
20	Original series	41
21	Trend series	42
22	Age, August 1997	44
23	Non-institutionalised persons, birthplace and year of arrival, August 1997	44

Graphs

	Labour force status:	
	Trend series, August 1985–August 1997—	
	Employed males	43
	Employed females	43
	Unemployed males	43
	Unemployed females	43
	Male unemployment rate	43
	Female unemployment rate	43
	Male participation rate	43
	Female participation rate	43

Tables

	Employed persons:	
24	Industry, average for year ending August 1996 and August 1997	45
25	Occupation, average for year ending August 1997	45
	Unemployed persons:	
26	Long-term unemployment	46

Graphs

	Employed persons:	
	Average employment by industry division, year ending August 1996 and August 1997	45
	Unemployed persons:	
	Long-term unemployed as a proportion of total unemployed, August 1995–August 1997	46

TABLE 1. LABOUR FORCE STATUS: ORIGINAL SERIES, NSW

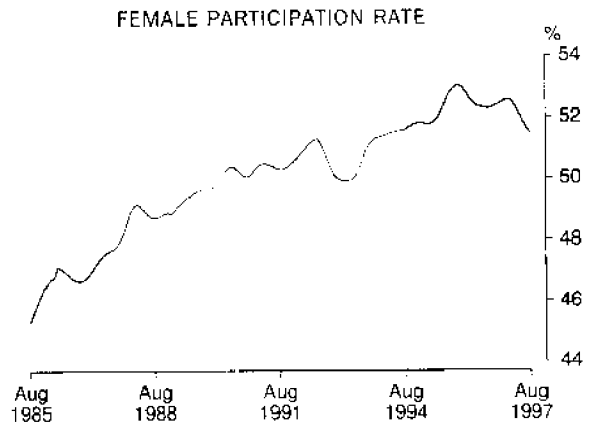
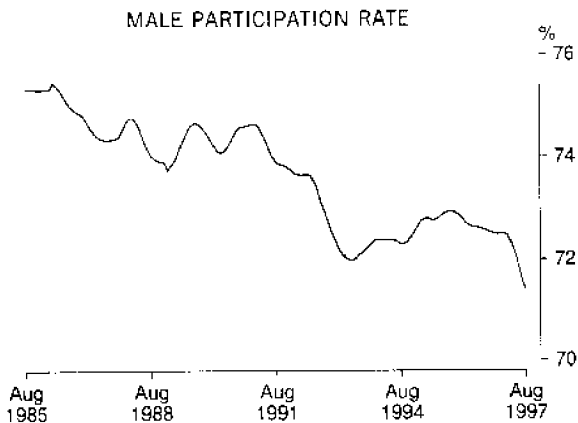
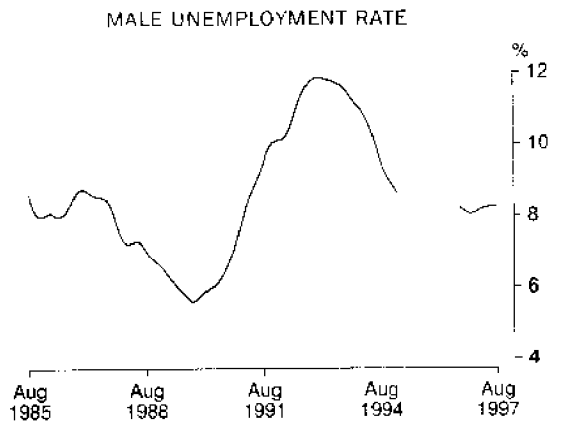
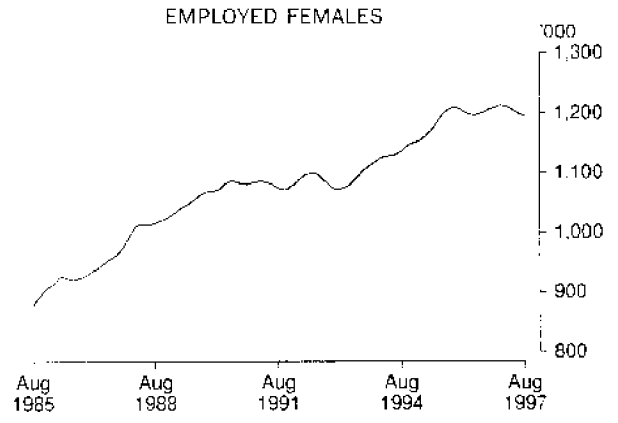
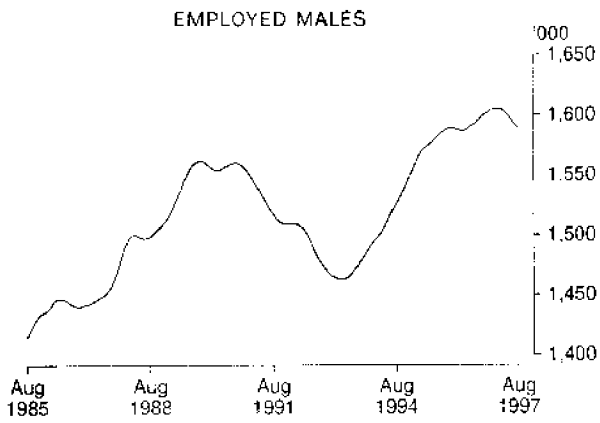
Month	Employed			Unemployed			Labour force ('000)	Not in labour force ('000)	Civilian population aged 15 and over ('000)	Unemployment rate (per cent)	Participation rate (per cent)
	Full-time workers ('000)	Part-time workers ('000)	Total ('000)	Looking for full-time work ('000)	Looking for part-time work ('000)	Total ('000)					
MALES											
August—											
1993	1,315.7	137.2	1,453.0	173.0	16.3	189.4	1,642.3	667.9	2,310.2	11.5	71.1
1994	1,346.4	173.4	1,519.8	141.4	12.4	153.8	1,673.6	659.4	2,333.0	9.2	71.7
1995	1,403.0	167.7	1,570.8	122.3	12.2	134.5	1,705.2	656.3	2,361.6	7.9	72.2
1996—											
June	1,404.2	184.5	1,588.7	119.5	19.1	138.6	1,727.4	661.9	2,389.3	8.0	72.3
July	1,421.9	173.5	1,595.4	115.8	16.9	132.8	1,728.2	664.4	2,392.5	7.7	72.2
August	1,402.2	185.3	1,587.5	128.7	19.1	147.8	1,735.4	660.4	2,395.8	8.5	72.4
1997											
May	1,408.0	189.3	1,597.3	127.6	15.7	143.3	1,740.7	677.4	2,418.1	8.2	72.0
June	1,416.4	182.5	1,598.9	116.8	12.3	129.1	1,728.1	692.7	2,420.7	7.5	71.4
July	1,422.3	178.1	1,600.4	130.3	15.1	145.4	1,745.8	677.8	2,423.6	8.3	72.0
August	1,390.3	177.2	1,567.6	120.3	14.9	135.2	1,702.8	723.7	2,426.5	7.9	70.2
MARRIED FEMALES											
August—											
1993	358.1	297.0	655.1	30.7	14.7	45.5	700.6	640.5	1,341.1	6.5	52.2
1994	385.3	292.3	677.6	26.4	12.0	38.4	716.0	667.5	1,383.5	5.4	51.8
1995	410.1	311.5	721.6	25.3	11.8	37.1	758.7	641.0	1,399.7	4.9	54.2
1996—											
June	395.9	327.1	723.0	23.9	14.6	38.4	761.4	655.9	1,417.3	5.0	53.7
July	404.1	312.0	716.1	25.7	11.4	37.1	753.2	665.0	1,418.2	4.9	53.1
August	400.9	315.3	716.2	22.4	14.1	36.5	752.7	665.2	1,417.9	4.9	53.1
1997—											
May	400.4	312.8	713.3	22.6	16.8	39.3	752.6	653.3	1,405.9	5.2	53.5
June	400.1	319.2	719.3	21.8	11.1	32.9	752.2	656.7	1,408.9	4.4	53.4
July	407.8	313.4	721.2	20.6	13.7	34.2	755.4	664.8	1,420.3	4.5	53.2
August	397.8	312.3	710.2	25.4	11.2	36.6	746.8	673.3	1,420.2	4.9	52.6
ALL FEMALES											
August—											
1993	654.3	437.5	1,091.8	78.8	30.5	109.3	1,201.1	1,191.5	2,392.6	9.1	50.2
1994	676.3	438.3	1,114.6	74.8	26.5	101.4	1,215.9	1,202.1	2,418.0	8.3	50.3
1995	708.8	471.9	1,180.7	59.8	32.4	92.2	1,272.9	1,171.8	2,444.7	7.2	52.1
1996—											
June	712.0	496.0	1,208.0	55.2	31.6	86.8	1,294.8	1,179.6	2,474.4	6.7	52.3
July	731.5	473.8	1,205.3	62.5	28.4	90.9	1,296.2	1,182.1	2,478.3	7.0	52.3
August	720.7	472.3	1,193.0	60.0	30.3	90.2	1,283.3	1,199.0	2,482.3	7.0	51.7
1997—											
May	720.4	486.2	1,206.6	67.2	34.7	101.9	1,308.5	1,199.5	2,508.0	7.8	52.2
June	704.3	488.1	1,192.4	64.1	28.2	92.3	1,284.7	1,226.0	2,510.7	7.2	51.2
July	729.6	483.6	1,213.2	61.7	30.9	92.7	1,305.9	1,207.7	2,513.6	7.1	52.0
August	703.9	479.0	1,182.9	65.3	27.5	92.7	1,275.6	1,240.8	2,516.5	7.3	50.7
PERSONS											
August—											
1993	1,970.1	574.7	2,544.8	251.8	46.9	298.7	2,843.5	1,859.4	4,702.9	10.5	60.5
1994	2,022.7	611.7	2,634.4	216.2	38.9	255.1	2,889.5	1,861.6	4,751.1	8.8	60.8
1995	2,111.8	639.6	2,751.5	182.1	44.6	226.6	2,978.1	1,828.2	4,806.3	7.6	62.0
1996—											
June	2,116.3	680.5	2,796.8	174.7	50.7	225.4	3,022.2	1,841.5	4,863.7	7.5	62.1
July	2,153.4	647.3	2,800.7	178.4	45.3	223.7	3,024.4	1,846.5	4,870.9	7.4	62.1
August	2,123.0	657.6	2,780.5	188.7	49.4	238.1	3,018.6	1,859.5	4,878.1	7.9	61.9
1997—											
May	2,128.4	675.5	2,804.0	194.9	50.4	245.3	3,049.2	1,876.9	4,926.1	8.0	61.9
June	2,120.8	670.6	2,791.3	181.0	40.5	221.4	3,012.8	1,918.7	4,931.4	7.3	61.1
July	2,151.9	661.7	2,813.6	192.1	46.0	238.1	3,051.7	1,885.5	4,937.2	7.8	61.8
August	2,094.3	656.2	2,750.5	185.6	42.4	228.0	2,978.4	1,964.5	4,942.9	7.7	60.3

TABLE 2. LABOUR FORCE STATUS: SEASONALLY ADJUSTED AND TREND SERIES (a), NSW

Month	Seasonally adjusted series					Trend series				
	Employed ('000)	Unemp-loyed ('000)	Labour force ('000)	Unemp-loyment rate (per cent)	Partici-pation rate (per cent)	Employed ('000)	Unemp-loyed ('000)	Labour force ('000)	Unemp-loyment rate (per cent)	Partici-pation rate (per cent)
MALES										
August—										
1993	1,462.1	194.7	1,656.8	11.8	71.7	1,471.7	193.9	1,665.6	11.6	72.1
1994	1,528.9	158.7	1,687.7	9.4	72.3	1,525.8	161.3	1,687.2	9.6	72.3
1995	1,579.9	139.3	1,719.2	8.1	72.8	1,581.0	139.7	1,720.8	8.1	72.9
1996—										
June	1,591.6	141.6	1,733.2	8.2	72.5	1,590.3	145.0	1,735.3	8.4	72.6
July	1,590.7	141.4	1,732.1	8.2	72.4	1,592.3	144.8	1,737.1	8.3	72.6
August	1,596.5	153.4	1,749.9	8.8	73.0	1,594.8	144.2	1,739.0	8.3	72.6
September	1,596.9	141.5	1,738.3	8.1	72.5	1,597.5	143.1	1,740.6	8.2	72.6
October	1,601.7	141.8	1,743.5	8.1	72.6	1,600.0	142.0	1,742.0	8.2	72.5
November	1,593.0	141.3	1,734.3	8.1	72.1	1,602.3	141.0	1,743.3	8.1	72.5
December	1,610.1	136.2	1,746.4	7.8	72.5	1,604.3	140.8	1,745.1	8.1	72.5
1997—										
January	1,618.0	137.3	1,755.2	7.8	72.9	1,605.4	141.3	1,746.6	8.1	72.5
February	1,589.7	151.1	1,740.7	8.7	72.2	1,605.9	142.3	1,748.2	8.1	72.5
March	1,607.1	142.0	1,749.0	8.1	72.5	1,605.4	143.3	1,748.7	8.2	72.5
April	1,610.0	143.7	1,753.7	8.2	72.6	1,603.4	143.8	1,747.2	8.2	72.3
May	1,596.7	147.3	1,744.0	8.4	72.1	1,600.4	143.9	1,744.2	8.2	72.1
June	1,601.8	131.9	1,733.7	7.6	71.6	1,596.7	143.8	1,740.4	8.3	71.9
July	1,595.9	155.1	1,751.0	8.9	72.2	1,592.5	143.7	1,736.2	8.3	71.6
August	1,576.2	140.4	1,716.7	8.2	70.7	1,589.2	143.3	1,732.6	8.3	71.4
FEMALES										
August—										
1993	1,099.7	116.7	1,216.4	9.6	50.8	1,096.3	115.1	1,211.4	9.5	50.6
1994	1,122.3	108.6	1,231.0	8.8	50.9	1,134.9	112.1	1,247.1	9.0	51.6
1995	1,188.8	99.4	1,288.2	7.7	52.7	1,194.7	90.3	1,285.0	7.0	52.6
1996—										
June	1,202.2	91.9	1,294.1	7.1	52.3	1,196.6	98.1	1,294.6	7.6	52.3
July	1,200.4	98.7	1,299.0	7.6	52.4	1,197.9	98.2	1,296.1	7.6	52.3
August	1,201.6	97.8	1,299.4	7.5	52.3	1,200.0	98.0	1,298.0	7.5	52.3
September	1,195.2	103.6	1,298.8	8.0	52.2	1,202.8	97.8	1,300.6	7.5	52.3
October	1,210.0	100.2	1,310.3	7.6	52.6	1,205.5	98.0	1,303.4	7.5	52.4
November	1,206.2	87.1	1,293.4	6.7	51.9	1,207.8	98.4	1,306.3	7.5	52.4
December	1,210.7	102.1	1,312.7	7.8	52.6	1,210.4	99.4	1,309.8	7.6	52.5
1997—										
January	1,213.8	101.3	1,315.0	7.7	52.6	1,212.0	100.8	1,312.7	7.7	52.6
February	1,212.3	107.7	1,320.0	8.2	52.8	1,211.8	102.4	1,314.2	7.8	52.6
March	1,206.3	98.9	1,305.2	7.6	52.2	1,209.8	103.4	1,313.3	7.9	52.5
April	1,216.2	104.5	1,320.8	7.9	52.7	1,206.8	103.5	1,310.2	7.9	52.3
May	1,202.3	107.0	1,309.3	8.2	52.2	1,203.4	102.6	1,306.0	7.9	52.1
June	1,186.3	97.8	1,284.1	7.6	51.1	1,200.1	101.8	1,301.9	7.8	51.9
July	1,208.3	100.6	1,309.0	7.7	52.1	1,197.3	101.1	1,298.3	7.8	51.7
August	1,191.6	100.8	1,292.4	7.8	51.4	1,195.1	100.3	1,295.3	7.7	51.5
PERSONS										
August—										
1993	2,561.8	311.4	2,873.2	10.8	61.1	2,568.0	308.9	2,877.0	10.7	61.2
1994	2,651.3	267.4	2,918.6	9.2	61.4	2,660.8	273.5	2,934.2	9.3	61.8
1995	2,768.7	238.7	3,007.4	7.9	62.6	2,775.7	230.0	3,005.8	7.7	62.5
1996—										
June	2,793.8	233.5	3,027.3	7.7	62.2	2,786.9	243.0	3,029.9	8.0	62.3
July	2,791.1	240.1	3,031.1	7.9	62.2	2,790.2	243.0	3,033.2	8.0	62.3
August	2,798.1	251.2	3,049.3	8.2	62.5	2,794.8	242.2	3,037.0	8.0	62.3
September	2,792.1	245.0	3,037.1	8.1	62.2	2,800.3	241.0	3,041.3	7.9	62.3
October	2,811.8	242.0	3,053.8	7.9	62.4	2,805.4	240.0	3,045.4	7.9	62.3
November	2,799.3	228.4	3,027.7	7.5	61.8	2,810.2	239.4	3,049.6	7.9	62.3
December	2,820.8	238.3	3,059.1	7.8	62.4	2,814.6	240.2	3,054.8	7.9	62.3
1997—										
January	2,831.7	238.5	3,070.3	7.8	62.6	2,817.3	242.1	3,059.4	7.9	62.3
February	2,801.9	258.8	3,060.7	8.5	62.3	2,817.7	244.7	3,062.4	8.0	62.4
March	2,813.4	240.8	3,054.2	7.9	62.1	2,815.2	246.8	3,062.0	8.1	62.3
April	2,826.2	248.2	3,074.5	8.1	62.5	2,810.2	247.3	3,057.5	8.1	62.1
May	2,799.0	254.3	3,053.3	8.3	62.0	2,803.7	246.5	3,050.2	8.1	61.9
June	2,788.1	229.7	3,017.8	7.6	61.2	2,796.8	245.6	3,042.3	8.1	61.7
July	2,804.2	255.7	3,060.0	8.4	62.0	2,789.8	244.8	3,034.6	8.1	61.5
August	2,767.9	241.2	3,009.1	8.0	60.9	2,784.3	243.6	3,027.9	8.0	61.3

(a) See Explanatory Notes 29 and 30.

TREND SERIES, NSW (a)



(a) Comparisons between these graphs should not be made, as their vertical axes are not similarly scaled.

TABLE 3. LABOUR FORCE STATUS: AGE, NSW, AUGUST 1997

Age group (years)	Employed			Unemployed			Labour force ('000)	Not in labour force ('000)	Civilian population aged 15 and over ('000)	Unemployment rate (per cent)	Participation rate (per cent)
	Full-time workers ('000)	Part-time workers ('000)	Total ('000)	Looking for full-time work ('000)	Looking for part-time work ('000)	Total ('000)					
MALES											
15-19	43.5	39.8	83.3	12.7	7.5	20.2	103.6	114.7	218.3	19.5	47.5
20-24	132.2	28.0	160.3	22.0	* 2.3	24.3	184.6	43.3	227.9	13.2	81.0
25-34	379.6	26.6	406.2	32.9	* 1.9	34.8	441.0	37.5	478.5	7.9	92.2
35-44	390.3	28.7	419.0	19.1	* 1.0	20.1	439.1	35.8	474.9	4.6	92.5
45-54	305.0	21.1	326.1	21.6	* 0.9	22.5	348.7	61.1	409.7	6.5	85.1
55-59	84.8	9.5	94.3	8.8	* 0.3	9.1	103.4	47.0	150.4	8.8	68.7
60-64	36.0	12.3	48.4	* 3.2	* 0.6	* 3.8	52.2	72.1	124.3	* 7.2	42.0
65 and over	18.9	11.2	30.0	* 0.0	* 0.3	* 0.3	30.3	312.2	342.5	* 1.0	8.9
Total	1,390.3	177.2	1,567.6	120.3	14.9	135.2	1,702.8	723.7	2,426.5	7.9	70.2
MARRIED FEMALES											
15-19	* 0.3	* 0.0	* 0.3	* 0.6	* 0.0	* 0.6	* 0.9	* 2.5	* 3.4	* 66.7	* 27.6
20-24	20.5	8.6	29.1	* 3.3	* 0.8	* 4.0	33.1	25.4	58.5	* 12.2	56.6
25-34	118.0	74.5	192.6	6.2	* 4.4	10.5	203.1	114.2	317.3	5.2	64.0
35-44	121.8	118.4	240.2	7.5	* 3.1	10.6	250.8	106.4	357.2	4.2	70.2
45-54	103.1	76.4	179.6	6.3	* 2.6	8.9	188.5	109.4	297.9	4.7	63.3
55-59	22.3	19.8	42.1	* 1.6	* 0.3	* 1.9	44.1	64.6	108.7	* 4.4	40.5
60-64	8.5	11.1	19.6	* 0.0	* 0.0	* 0.0	19.6	69.0	88.6	* 0.0	22.1
65 and over	* 3.3	* 3.5	6.8	* 0.0	* 0.0	* 0.0	6.8	181.8	188.6	* 0.0	3.6
Total	397.8	312.3	710.2	25.4	11.2	36.6	746.8	673.3	1,420.2	4.9	52.6
ALL FEMALES											
15-19	26.5	59.3	85.8	10.3	6.6	16.9	102.7	105.1	207.8	16.5	49.4
20-24	97.7	45.9	143.6	12.0	* 4.3	16.3	159.9	64.8	224.8	10.2	71.1
25-34	209.4	98.5	307.9	14.2	6.6	20.7	328.7	157.3	485.9	6.3	67.6
35-44	174.5	138.7	313.2	14.9	5.4	20.4	333.5	145.5	479.0	6.1	69.6
45-54	145.6	96.3	241.9	11.3	* 3.8	15.1	257.0	142.4	399.3	5.9	64.4
55-59	33.9	22.0	56.0	* 2.6	* 0.7	* 3.2	59.2	86.4	145.6	* 5.5	40.7
60-64	12.4	13.7	26.1	* 0.0	* 0.0	* 0.0	26.1	99.5	125.6	* 0.0	20.8
65 and over	* 3.9	* 4.6	8.5	* 0.0	* 0.0	* 0.0	8.5	439.8	448.4	* 0.0	1.9
Total	703.9	479.0	1,182.9	65.3	27.5	92.7	1,275.6	1,240.8	2,516.5	7.3	50.7
PERSONS											
15-19	70.0	99.1	169.1	23.0	14.1	37.2	206.3	219.8	426.1	18.0	48.4
20-24	229.9	73.9	303.8	34.0	6.6	40.6	344.5	108.2	452.7	11.8	76.1
25-34	589.0	125.1	714.1	47.0	8.5	55.6	769.7	194.8	964.5	7.2	79.8
35-44	564.8	167.3	732.1	34.0	6.5	40.5	772.6	181.3	953.9	5.2	81.0
45-54	450.6	117.4	568.0	32.9	* 4.8	37.7	605.6	203.4	809.1	6.2	74.9
55-59	118.7	31.5	150.2	11.4	* 1.0	12.4	162.6	133.4	296.0	7.6	54.9
60-64	48.4	26.1	74.5	* 3.2	* 0.6	* 3.8	78.3	171.6	249.9	* 4.8	31.3
65 and over	22.8	15.8	38.6	* 0.0	* 0.3	* 0.3	38.9	752.0	790.9	* 0.8	4.9
Total	2,094.3	656.2	2,750.5	185.6	42.4	228.0	2,978.4	1,964.5	4,942.9	7.7	60.3

PERSONS AGED 15-19 IN THE LABOUR FORCE, NSW:
FULL-TIME ATTENDANCE AT SCHOOL OR A TERTIARY EDUCATIONAL INSTITUTION

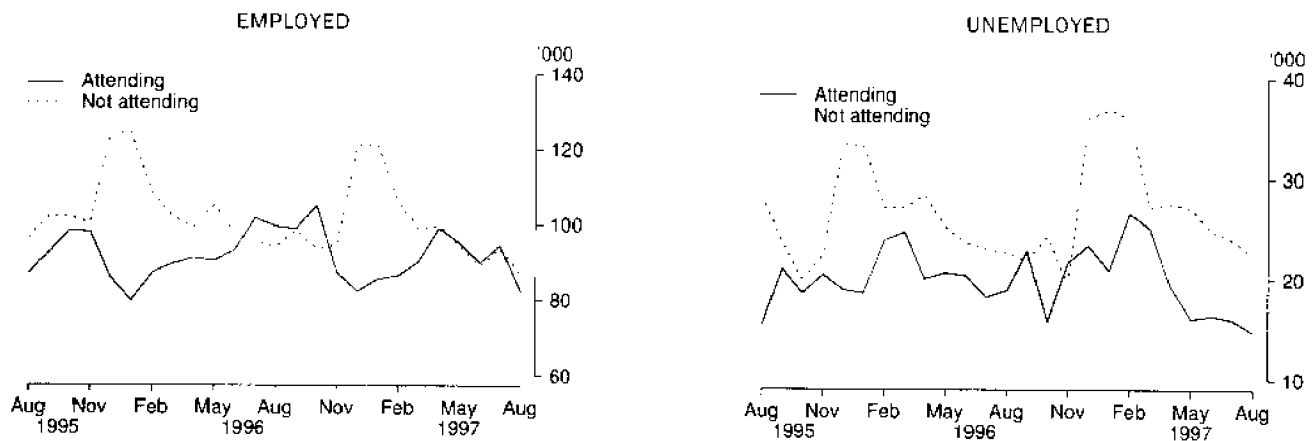


TABLE 4. LABOUR FORCE STATUS: PERSONS AGED 15-24 BY FULL-TIME EDUCATIONAL ATTENDANCE, NSW, AUGUST 1997

Age (years)	Employed		Unemployed				Labour force ('000)	Not in labour force ('000)	Civilian population aged 15 and over ('000)	Unemployment rate (per cent)	Participation rate (per cent)
	Full-time workers ('000)	Part-time workers ('000)	Total ('000)	Looking for full-time work ('000)	Looking for part-time work ('000)	Total ('000)					
ATTENDING SCHOOL OR A TERTIARY EDUCATIONAL INSTITUTION FULL-TIME											
15-19	*2.0	80.2	82.3	*1.0	13.8	14.8	97.0	202.3	299.3	15.2	32.4
15	*0.0	17.0	17.0	*0.0	*4.8	*4.8	21.8	60.5	82.3	*22.0	26.5
16	*0.3	19.0	19.3	*0.3	*2.6	*2.9	22.2	50.9	73.1	*13.1	30.3
17	*0.0	15.9	15.9	*0.0	*1.5	*1.5	17.4	48.7	66.1	*8.8	26.3
18	*0.5	14.4	14.9	*0.7	*3.5	*4.2	19.1	24.4	43.5	*21.8	44.0
19	*1.2	13.9	15.1	*0.0	*1.4	*1.4	16.5	17.8	34.3	*8.4	48.2
20-24	*2.8	32.2	35.0	*2.3	*4.6	7.0	42.0	46.0	88.0	16.6	47.7
20	*0.4	14.3	14.6	*1.3	*1.1	*2.4	17.1	14.8	31.9	*14.3	53.6
21	*0.3	7.3	7.6	*0.3	*1.4	*1.7	9.3	13.0	22.3	*18.4	41.8
22	*0.3	5.5	5.8	*0.7	*1.4	*2.1	8.0	8.4	16.3	*26.5	48.8
23	*1.1	*3.1	*4.2	*0.0	*0.7	*0.7	*4.9	*5.0	9.9	*13.9	*49.4
24	*0.7	*2.0	*2.7	*0.0	*0.0	*0.0	*2.7	*4.8	7.6	*0.0	*35.9
Total aged 15-24	*4.9	112.4	117.3	*3.3	18.4	21.7	139.0	248.3	387.3	15.6	35.9
NOT ATTENDING SCHOOL OR A TERTIARY EDUCATIONAL INSTITUTION FULL-TIME (a)											
15-19	68.0	18.9	86.8	22.0	*0.3	22.4	109.2	17.5	126.7	20.5	86.2
15	*0.0	*1.0	*1.0	*0.7	*0.3	*1.0	*2.0	*1.9	*3.9	*51.2	*50.8
16	*4.5	*2.4	6.9	*4.1	*0.0	*4.1	11.0	*2.4	13.4	*37.3	82.3
17	11.2	*3.0	14.2	*2.4	*0.0	*2.4	16.6	*1.8	18.5	*14.5	90.1
18	22.8	5.9	28.6	7.3	*0.0	7.3	36.0	*4.9	40.9	20.4	88.0
19	29.4	6.7	36.1	7.5	*0.0	7.5	43.6	6.5	50.1	17.2	87.0
20-24	227.1	41.8	268.8	31.7	*2.0	33.7	302.5	62.1	364.7	11.1	83.0
20	33.5	7.9	41.3	*3.2	*0.4	*3.6	44.9	8.7	53.6	*7.9	83.7
21	36.9	9.3	46.2	6.9	*0.5	7.3	53.6	10.8	64.4	13.7	83.2
22	46.2	7.6	53.7	8.3	*0.0	8.3	62.0	11.9	74.0	13.4	83.9
23	51.4	9.7	61.1	7.6	*0.3	8.0	69.0	14.6	83.6	11.6	82.6
24	59.2	7.3	66.5	5.7	*0.8	6.5	73.0	16.1	89.1	8.9	81.9
Total aged 15-24	295.1	60.6	355.7	53.7	*2.4	56.1	411.8	79.7	491.4	13.6	83.8
TOTAL											
15-19	70.0	99.1	169.1	23.0	14.1	37.2	206.3	219.8	426.1	18.0	48.4
15	*0.0	18.0	18.0	*0.7	*5.1	5.8	23.8	62.4	86.2	24.4	27.6
16	*4.8	21.4	26.2	*4.4	*2.6	7.0	33.2	53.3	86.5	21.1	38.4
17	11.2	18.9	30.1	*2.4	*1.5	*3.9	34.0	50.5	84.6	*11.6	40.2
18	23.3	20.3	43.6	8.0	*3.5	11.5	55.1	29.2	84.3	20.9	65.3
19	30.6	20.6	51.2	7.5	*1.4	8.9	60.1	24.3	84.4	14.8	71.2
20-24	229.9	73.9	303.8	34.0	6.6	40.6	344.5	108.2	452.7	11.8	76.1
20	33.8	22.1	56.0	*4.5	*1.5	6.0	62.0	23.5	85.5	9.7	72.5
21	37.2	16.6	53.8	7.2	*1.9	9.1	62.9	23.8	86.7	14.4	72.5
22	46.5	13.1	59.6	9.0	*1.4	10.4	70.0	20.3	90.3	14.9	77.5
23	52.5	12.7	65.3	7.6	*1.0	8.7	73.9	19.6	93.5	11.7	79.0
24	59.9	9.3	69.2	5.7	*0.8	6.5	75.7	20.9	96.7	8.6	78.3
Total aged 15-24	299.9	173.0	473.0	57.0	20.8	77.8	550.8	327.9	878.7	14.1	62.7

(a) Includes institutionalised persons.

TABLE 5. LABOUR FORCE STATUS: FAMILY STATUS, NSW, AUGUST 1997

Family status	Employed			Unemployed			Labour force ('000)	Not in labour force ('000)	Civilian population aged 15 and over ('000)	Unemployment rate (per cent)	Participation rate (per cent)
	Full-time workers ('000)	Part-time workers ('000)	Total ('000)	Looking for full-time work ('000)	Looking for part-time work ('000)	Total ('000)					
<i>Member of a family</i>	1,687.2	571.1	2,258.2	141.1	34.5	175.7	2,433.9	1,427.9	3,861.8	7.2	63.0
Husband	907.5	74.1	981.6	49.6	* 2.5	52.1	1,033.6	353.5	1,387.1	5.0	74.5
With children aged 0-14 present	490.1	31.9	522.0	28.1	* 1.0	29.1	551.0	42.5	593.6	5.3	92.8
Without children aged 0-14 present	417.4	42.2	459.6	21.5	* 1.5	23.0	482.6	310.9	793.5	4.8	60.8
With dependants present	564.3	37.4	601.7	33.0	* 1.2	34.2	635.9	55.5	691.4	5.4	92.0
Without dependants present	343.2	36.7	379.9	16.6	* 1.2	17.8	397.7	298.0	695.7	4.5	57.2
Wife	380.7	301.6	682.3	24.5	11.2	35.7	718.0	633.8	1,351.9	5.0	53.1
With children aged 0-14 present	137.1	174.8	311.9	12.8	8.5	21.3	333.2	233.6	566.8	6.4	58.8
Without children aged 0-14 present	243.6	126.8	370.4	11.7	* 2.7	14.4	384.8	400.2	785.1	3.8	49.0
With dependants present	176.2	197.6	373.8	14.8	9.4	24.2	398.1	263.8	661.8	6.1	60.1
Without dependants present	204.5	104.0	308.5	9.6	* 1.8	11.5	320.0	370.0	690.0	3.6	46.4
Not-married male family head	26.2	* 4.1	30.3	* 4.6	* 0.8	5.4	35.6	17.2	52.9	15.1	67.4
With children aged 0-14 present	6.1	* 2.3	8.4	* 0.9	* 0.8	* 1.7	10.1	6.3	16.4	* 16.7	61.8
Without children aged 0-14 present	20.0	* 1.8	21.8	* 3.7	* 0.0	* 3.7	25.5	11.0	36.5	* 14.5	70.0
With dependants present	10.9	* 2.6	13.5	* 2.3	* 0.8	* 3.1	16.6	8.6	25.2	* 18.4	65.7
Without dependants present	15.3	* 1.5	16.7	* 2.3	* 0.0	* 2.3	19.1	8.6	27.7	* 12.2	69.0
Not-married female family head	49.4	39.9	89.3	12.4	* 4.6	17.1	106.4	123.6	230.0	16.0	46.3
With children aged 0-14 present	21.1	30.0	51.0	7.7	* 4.0	11.8	62.8	72.3	135.2	18.8	46.5
Without children aged 0-14 present	28.4	9.9	38.3	* 4.7	* 0.6	* 5.3	43.6	51.3	94.9	* 12.1	45.9
With dependants present	31.8	34.5	66.3	10.4	* 4.4	14.8	81.1	80.9	161.9	18.3	50.1
Without dependants present	17.6	5.4	23.1	* 2.0	* 0.3	* 2.3	25.3	42.8	68.1	* 9.0	37.2
Full-time student aged 15-24 (a)	* 3.5	99.7	103.2	* 2.6	13.3	15.9	119.1	200.4	319.4	13.3	37.3
Other child of family head	294.8	46.7	341.5	40.9	* 1.8	42.8	384.3	51.6	436.0	11.1	88.2
Other relative of family head	25.1	* 5.0	30.1	6.5	* 0.3	6.8	36.8	47.8	84.6	18.4	43.5
<i>Not a member of a family</i>	340.7	64.0	404.8	38.1	6.3	44.4	449.2	354.9	804.1	9.9	55.9
Living alone	172.1	28.1	200.2	19.1	* 1.6	20.7	220.9	295.3	516.2	9.4	42.8
Not living alone	168.6	35.9	204.5	19.1	* 4.6	23.7	228.3	59.6	287.9	10.4	79.3
<i>Not family coded</i>	66.3	21.1	87.5	6.3	* 1.6	7.9	95.4	181.7	277.1	8.3	34.4
Total	2,094.3	656.2	2,750.5	185.6	42.4	228.0	2,978.4	1,964.5	4,942.9	7.7	60.3

(a) Excludes persons aged 20-24 attending school.

TABLE 6. EMPLOYED PERSONS: STATUS IN EMPLOYMENT (a), NSW ('000)

Status in employment	Males			Females			Persons		
	August 1996	May 1997	August 1997	August 1996	May 1997	August 1997	August 1996	May 1997	August 1997
Employees	1,322.8	1,339.2	1,290.2	1,068.6	1,082.1	1,044.4	2,391.4	2,421.3	2,334.6
Employers	80.1	73.2	86.3	39.4	35.1	45.0	119.5	108.3	131.3
Own account workers	172.1	175.0	179.5	67.9	73.2	80.2	240.0	248.2	259.7
Total employed (b)	1,587.5	1,597.3	1,567.6	1,193.0	1,206.6	1,182.9	2,780.5	2,804.0	2,750.5

(a) Status in Employment replaces the previous term Status of Worker. No definitional changes have been made - the only changes are to the classification titles. (b) Includes contributing family workers.

TABLE 7. EMPLOYED PERSONS: AGE, NSW
(^{'000})

Month	Age group (years)								Total employed
	15-19	20-24	25-34	35-44	45-54	55-59	60-64	65 and over	
MALES									
1996									
August	100.5	180.2	406.5	404.0	324.6	90.1	51.6	30.1	1,587.5
1997—									
May	97.2	167.2	405.1	413.1	335.2	94.1	51.0	34.5	1,597.3
June	91.9	167.1	413.1	415.3	335.6	95.3	50.2	30.4	1,598.9
July	93.6	165.2	409.7	418.1	333.5	94.4	52.2	33.7	1,600.4
August	83.3	160.3	406.2	419.0	326.1	94.3	48.4	30.0	1,567.6
MARRIED FEMALES									
1996									
August	* 2.0	31.6	194.0	248.8	180.9	38.2	14.4	6.3	716.2
1997—									
May	* 1.0	32.3	183.6	239.5	186.3	44.8	18.1	7.7	713.3
June	* 2.6	29.6	188.2	239.0	189.1	46.3	17.2	7.4	719.3
July	* 2.3	29.4	190.8	241.8	188.5	42.3	18.9	7.3	721.2
August	* 0.3	29.1	192.6	240.2	179.6	42.1	19.6	6.8	710.2
ALL FEMALES									
1996									
August	93.3	153.2	304.1	318.9	236.7	54.6	21.6	10.7	1,193.0
1997—									
May	92.4	149.3	308.7	312.8	248.3	60.9	22.4	11.7	1,206.6
June	87.1	147.2	302.5	314.6	246.8	61.4	22.8	10.0	1,192.4
July	94.9	148.1	314.0	316.1	247.6	57.9	23.9	10.7	1,213.2
August	85.8	143.6	307.9	313.2	241.9	56.0	26.1	8.5	1,182.9
PERSONS									
1996—									
August	193.8	333.4	710.6	722.9	561.3	144.7	73.2	40.7	2,780.5
1997									
May	189.6	316.5	713.8	725.9	583.5	154.9	73.4	46.3	2,804.0
June	179.0	314.3	715.5	729.9	582.4	156.7	73.0	40.4	2,791.3
July	188.5	313.3	723.6	734.2	581.1	152.3	76.1	44.5	2,813.6
August	169.1	303.8	714.1	732.1	568.0	150.2	74.5	38.6	2,750.5

ANNUAL CHANGE IN EMPLOYMENT BY AGE, NSW, AUGUST 1996 TO AUGUST 1997

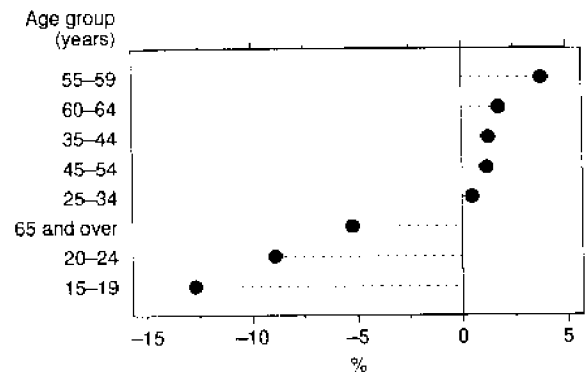
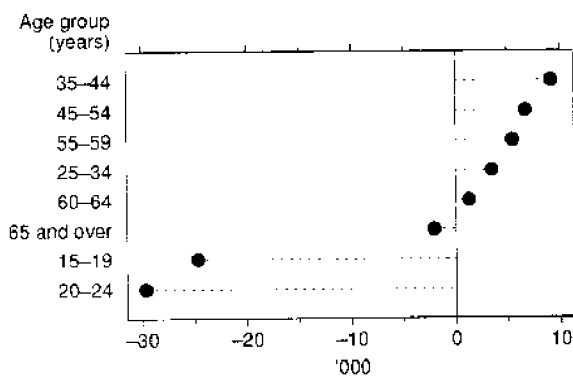
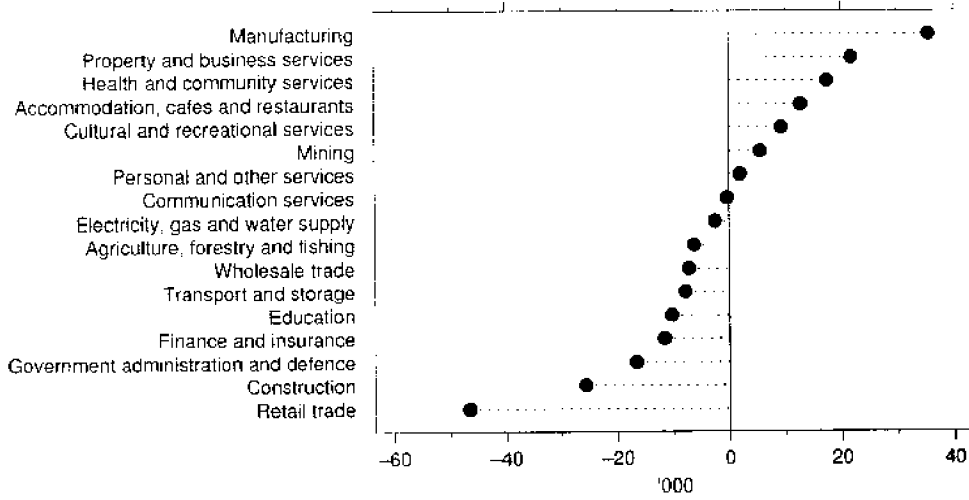


TABLE 8. EMPLOYED PERSONS: INDUSTRY, NSW
('000)

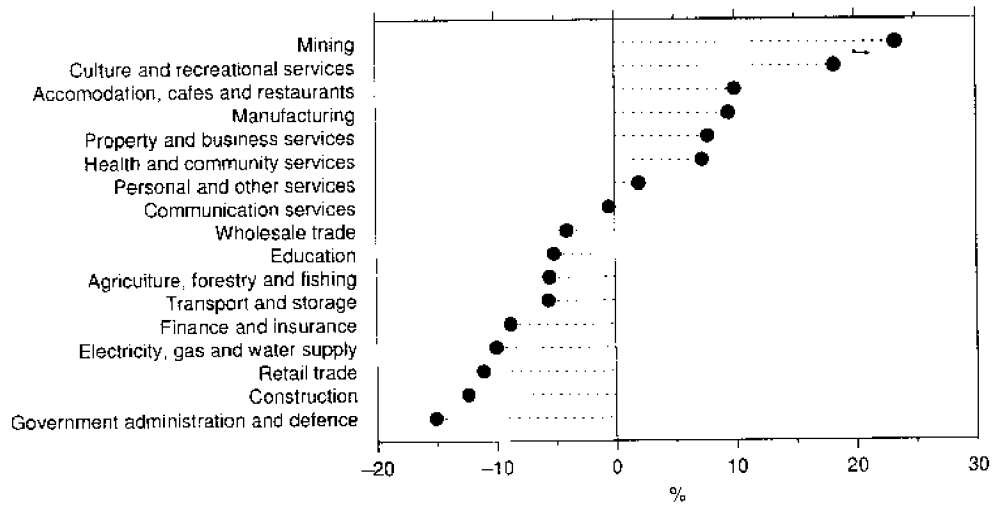
Industry division and subdivision	Males		Females		Persons	
	August 1996	August 1997	August 1996	August 1997	August 1996	August 1997
<i>Agriculture, forestry and fishing</i>	81.0	73.7	32.0	33.2	113.1	106.9
Agriculture	68.4	64.5	30.2	31.2	98.6	95.7
Services to agriculture; hunting and trapping	5.5	* 3.1	* 1.2	* 1.3	6.7	* 4.4
Forestry and logging	* 3.6	* 4.1	* 0.6	* 0.7	* 4.2	* 4.8
Commercial fishing	* 3.4	* 2.0	* 0.0	* 0.0	* 3.4	* 2.0
<i>Mining</i>	22.4	27.2	* 1.5	* 2.3	23.9	29.5
Coal mining	16.0	19.1	* 0.0	* 0.3	16.0	19.4
Oil and gas extraction	* 0.0	* 0.6	* 0.0	* 0.0	* 0.0	* 0.6
Metal ore mining	* 2.2	* 2.4	* 0.0	* 0.0	* 2.2	* 2.4
Other mining	* 3.6	* 3.9	* 0.3	* 1.0	* 3.9	* 4.9
Services to mining	* 0.6	* 1.1	* 1.2	* 1.0	* 1.8	* 2.1
<i>Manufacturing</i>	269.1	297.1	104.9	112.5	374.0	409.5
Food, beverage and tobacco manufacturing	36.6	40.1	16.4	16.7	53.0	56.8
Textile, clothing, footwear and leather manufacturing	12.0	13.9	22.4	20.2	34.3	34.1
Wood and paper product manufacturing	17.1	17.2	* 4.8	* 4.3	21.9	21.5
Printing, publishing and recorded media	27.2	30.0	20.4	26.7	47.6	56.7
Petroleum, coal, chemical and associated product manufacturing	25.9	33.3	9.8	12.4	35.8	45.7
Non-metallic mineral product manufacturing	14.2	11.9	* 1.5	* 2.2	15.7	14.1
Metal product manufacturing	59.3	59.8	6.8	6.5	66.0	66.3
Machinery and equipment manufacturing	57.9	70.1	19.4	17.1	77.3	87.2
Other manufacturing	19.0	20.5	* 3.4	6.5	22.4	27.0
<i>Electricity, gas and water supply</i>	20.1	20.1	* 5.1	* 2.5	25.1	22.6
Electricity and gas supply	13.5	12.4	* 3.3	* 0.3	16.9	12.7
Water supply, sewerage and drainage services	6.6	7.8	* 1.7	* 2.2	8.3	10.0
<i>Construction</i>	178.9	158.8	27.0	21.5	205.9	180.3
General construction	60.1	52.2	10.4	10.2	70.6	62.4
Construction trade services	118.7	106.6	16.6	11.3	135.3	118.0
<i>Wholesale trade</i>	118.3	118.2	60.3	53.2	178.6	171.4
Basic material wholesaling	24.4	28.9	7.7	5.7	32.0	34.7
Machinery and motor vehicle wholesaling	55.5	51.9	21.5	19.9	77.1	71.9
Personal and household good wholesaling	38.4	37.3	31.0	27.6	69.4	64.9
<i>Retail trade</i>	208.5	187.7	209.8	184.0	418.3	371.8
Food retailing	74.9	75.1	79.4	76.8	154.3	151.9
Personal and household good retailing	72.2	57.6	110.7	94.8	182.9	152.4
Motor vehicle retailing and services	61.4	55.1	19.7	12.4	81.1	67.5
<i>Accommodation, cafes and restaurants</i>	62.5	66.1	66.1	75.3	128.6	141.4
<i>Transport and storage</i>	107.1	102.7	33.2	29.9	140.4	132.6
Road transport	55.8	58.5	10.1	9.8	65.9	68.3
Rail transport	17.0	14.3	* 3.6	* 2.7	20.7	17.1
Water transport	* 5.0	* 1.8	* 0.6	* 0.0	5.5	* 1.8
Air and Space transport	12.5	16.1	8.0	9.2	20.5	25.3
Other transport	* 2.0	* 0.3	* 0.0	* 0.4	* 2.0	* 0.7
Services to transport	11.2	9.0	9.7	7.4	20.8	16.5
Storage	* 3.7	* 2.5	* 1.3	* 0.3	* 5.0	* 2.9
<i>Communication services</i>	38.1	36.8	18.1	19.0	56.1	55.8
<i>Finance and insurance</i>	59.6	52.4	72.2	67.8	131.8	120.2
Finance	31.0	29.3	45.6	44.6	76.6	73.8
Insurance	15.5	10.8	16.1	10.4	31.5	21.2
Services to finance and insurance	13.1	12.3	10.6	12.9	23.7	25.1
<i>Property and business services</i>	155.5	169.3	123.7	131.7	279.3	301.0
Property services	19.8	17.7	16.3	12.2	36.1	29.9
Business services	135.7	151.7	107.4	119.5	243.2	271.1
<i>Government administration and defence</i>	65.3	54.8	44.8	38.7	110.1	93.5
Government administration	61.2	51.9	42.3	37.7	103.6	89.6
Defence	* 4.1	* 2.9	* 2.4	* 0.9	6.5	* 3.9
<i>Education</i>	67.8	57.1	134.9	135.3	202.7	192.4
<i>Health and community services</i>	54.3	61.5	184.5	194.9	238.9	256.4
Health services	44.1	45.7	142.9	156.8	187.1	202.6
Community services	10.2	15.8	41.6	38.0	51.8	53.8
<i>Cultural and recreational services</i>	26.0	32.0	25.5	28.9	51.5	60.9
Motion picture, radio and television services	5.5	9.9	6.1	8.4	11.7	18.3
Libraries, museums and the arts	7.6	8.3	* 4.5	9.1	12.1	17.4
Sport and recreation	12.9	13.8	14.8	11.4	27.8	25.2
<i>Personal and other services</i>	52.9	52.0	49.4	52.3	102.3	104.3
Personal services	18.7	15.9	30.0	30.3	48.7	46.2
Other services	32.9	35.3	16.7	19.9	49.7	55.3
Private households employing staff	* 1.3	* 0.8	* 2.7	* 2.1	* 3.9	* 2.9
Total employed	1,587.5	1,567.6	1,193.0	1,182.9	2,780.5	2,750.5

ANNUAL CHANGE IN EMPLOYMENT BY INDUSTRY DIVISION, NSW,
AUGUST 1996 TO AUGUST 1997

NUMBER



PROPORTION



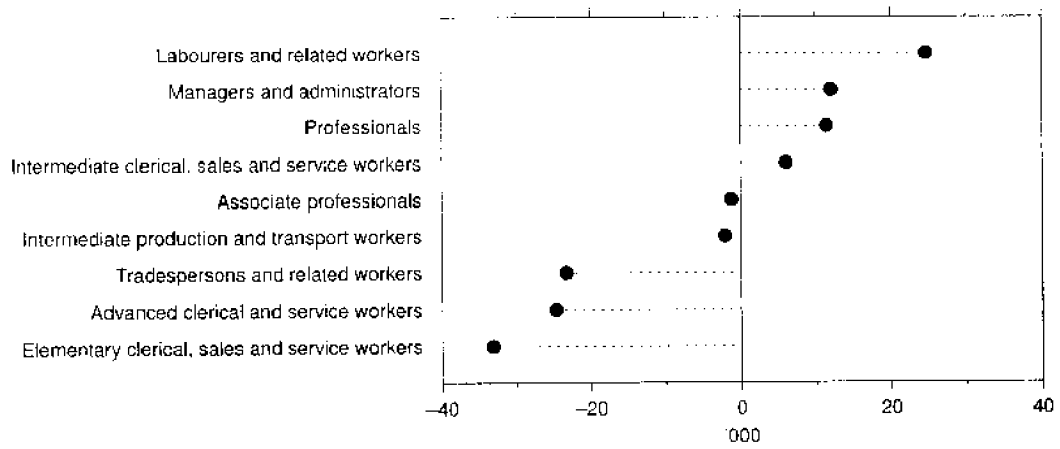
**TABLE 9. EMPLOYED PERSONS: OCCUPATION (a), NSW
(^{'000})**

<i>Major and sub-major occupation group</i>	<i>Males</i>		<i>Females</i>		<i>Persons</i>	
	<i>August 1996</i>	<i>August 1997</i>	<i>August 1996</i>	<i>August 1997</i>	<i>August 1996</i>	<i>August 1997</i>
<i>Managers and administrators</i>	157.5	161.0	38.2	46.7	195.7	207.8
Generalist managers	50.6	50.3	* 3.9	8.1	54.5	58.4
Specialist managers	66.2	67.5	19.0	22.1	85.1	89.6
Farmers and farm managers	40.7	43.2	15.3	16.5	56.1	59.7
<i>Professionals</i>	246.0	244.7	252.6	265.4	498.6	510.1
Science, building and engineering professionals	40.3	46.3	9.9	7.6	50.1	53.9
Business and information professionals	92.4	83.3	42.4	54.9	134.8	138.1
Health professionals	22.9	21.9	72.0	67.8	95.0	89.7
Education professionals	46.0	43.3	90.5	95.8	136.5	139.0
Social, arts and miscellaneous professionals	44.4	49.9	37.8	39.4	82.2	89.4
<i>Associate professionals</i>	195.0	184.2	90.0	99.6	285.0	283.8
Science, engineering and related associate professionals	34.6	34.5	7.7	6.0	42.2	40.5
Business and administrative associate professionals	48.8	42.9	30.7	34.5	79.5	77.4
Managing supervisors (sales and service)	84.8	82.9	38.4	39.3	123.2	122.2
Health and welfare associate professionals	6.4	6.5	7.2	13.0	13.6	19.5
Other associate professionals	20.4	17.5	6.1	6.8	26.5	24.2
<i>Tradespersons and related workers</i>	335.2	314.8	32.6	29.6	367.8	344.5
Mechanical and fabrication engineering tradespersons	59.9	65.5	* 0.6	* 0.0	60.5	65.5
Automotive tradespersons	40.7	43.0	* 0.3	* 0.4	41.0	43.4
Electrical and electronics tradespersons	60.9	60.1	* 1.9	* 0.6	62.8	60.7
Construction tradespersons	85.3	66.7	* 0.3	* 0.3	85.6	67.0
Food tradespersons	24.5	17.2	7.0	6.3	31.5	23.5
Skilled agricultural and horticultural workers	21.1	17.0	* 1.3	* 2.6	22.4	19.7
Other tradespersons and related workers	42.7	45.3	21.3	19.4	64.0	64.7
<i>Advanced clerical and service workers</i>	14.0	12.1	146.8	123.9	160.7	136.0
Secretaries and personal assistants	* 1.3	* 0.7	95.0	89.7	96.4	90.4
Other advanced clerical and service workers	12.6	11.4	51.7	34.1	64.4	45.6
<i>Intermediate clerical, sales and service workers</i>	137.4	138.5	315.9	320.9	453.3	459.4
Intermediate clerical workers	67.6	71.4	203.9	201.1	271.5	272.6
Intermediate sales and related workers	37.1	31.2	16.2	15.8	53.3	47.0
Intermediate service workers	32.8	35.8	95.8	104.0	128.5	139.8
<i>Intermediate production and transport workers</i>	227.5	225.9	33.8	33.4	261.4	259.3
Intermediate plant operators	50.6	50.9	* 1.5	* 2.4	52.1	53.3
Intermediate machine operators	21.2	14.4	14.2	12.6	35.4	27.0
Road and rail transport drivers	82.3	87.9	* 5.2	* 4.2	87.5	92.0
Other intermediate production and transport workers	73.5	72.7	13.0	14.2	86.5	86.9
<i>Elementary clerical, sales and service workers</i>	107.6	101.1	189.9	163.3	297.5	264.4
Elementary clerks	15.1	8.9	20.6	14.9	35.7	23.9
Elementary sales workers	68.8	69.7	160.2	141.0	228.9	210.8
Elementary service workers	23.7	22.5	9.1	7.3	32.9	29.8
<i>Labourers and related workers</i>	167.2	185.1	93.3	100.1	260.5	285.2
Cleaners	26.6	31.3	32.5	36.6	59.1	67.9
Factory labourers	45.7	58.3	24.8	27.6	70.5	85.9
Other labourers and related workers	94.9	95.6	36.1	35.9	131.0	131.4
Total employed	1,587.5	1,567.6	1,193.0	1,182.9	2,780.5	2,750.5

(a) Occupation data are now classified according to the Second Edition of the Australian Standard Classification of Occupations (ASCO). See the Explanatory Notes for more details.

ANNUAL CHANGE IN EMPLOYMENT BY OCCUPATION GROUP, NSW,
AUGUST 1996 TO AUGUST 1997

NUMBER



PROPORTION



**TABLE 10. UNEMPLOYED PERSONS: AGE, NSW
(^{'000})**

Month	Age group (years)						Total unemployed
	15-19	20-24	25-34	35-44	45-54	55 and over	
MALES							
1996— August	24.7	21.4	36.9	25.5	23.8	15.5	147.8
1997— May	23.7	29.0	37.5	22.8	19.8	10.5	143.3
June	23.2	23.4	34.8	18.4	19.9	9.4	129.1
July	23.0	29.2	39.4	20.6	20.9	12.2	145.4
August	20.2	24.3	34.8	20.1	22.5	13.2	135.2
FEMALES							
1996— August	17.0	16.2	20.6	18.4	15.0	* 3.1	90.2
1997— May	19.4	22.3	22.6	20.4	16.3	* 0.9	101.9
June	18.0	19.3	20.2	17.3	14.9	* 2.6	92.3
July	16.9	17.3	24.2	15.9	15.8	* 2.6	92.7
August	16.9	16.3	20.7	20.4	15.1	* 3.2	92.7
PERSONS							
1996— August	41.6	37.6	57.5	43.9	38.8	18.6	238.1
1997— May	43.1	51.3	60.1	43.2	36.1	11.4	245.3
June	41.2	42.7	55.0	35.7	34.8	12.0	221.4
July	40.0	46.5	63.6	36.5	36.7	14.8	238.1
August	37.2	40.6	55.6	40.5	37.7	16.5	228.0

**TABLE 11. UNEMPLOYED PERSONS: UNEMPLOYMENT RATE BY AGE, NSW
(per cent)**

Month	Age group (years)						Total unemployment rate
	15-19	20-24	25-34	35-44	45-54	55 and over	
MALES							
1996— August	19.7	10.6	8.3	5.9	6.8	8.3	8.5
1997— May	19.6	14.8	8.5	5.2	5.6	5.5	8.2
June	20.2	12.3	7.8	4.2	5.6	5.1	7.5
July	19.8	15.0	8.8	4.7	5.9	6.3	8.3
August	19.5	13.2	7.9	4.6	6.5	7.1	7.9
FEMALES							
1996— August	15.4	9.5	6.4	5.5	6.0	* 3.4	7.0
1997— May	17.4	13.0	6.8	6.1	6.2	* 1.0	7.8
June	17.1	11.6	6.3	5.2	5.7	* 2.7	7.2
July	15.1	10.4	7.2	4.8	6.0	* 2.7	7.1
August	16.5	10.2	6.3	6.1	5.9	* 3.5	7.3
PERSONS							
1996— August	17.7	10.1	7.5	5.7	6.5	6.7	7.9
1997— May	18.5	14.0	7.8	5.6	5.8	4.0	8.0
June	18.7	12.0	7.1	4.7	5.6	4.3	7.3
July	17.5	12.9	8.1	4.7	5.9	5.1	7.8
August	18.0	11.8	7.2	5.2	6.2	5.9	7.7

TABLE 12. UNEMPLOYED PERSONS: INDUSTRY (a) AND OCCUPATION (b) OF LAST FULL-TIME JOB, NSW, AUGUST 1997
(000)

	Males	Females	Persons
<i>Had worked for two weeks or more in a full-time job in the last two years</i>	69.4	34.7	104.1
Industry division—			
Agriculture, forestry and fishing	5.5	* 1.5	7.0
Manufacturing	14.8	* 4.8	19.6
Construction	6.9	* 0.3	7.2
Wholesale trade	* 3.3	* 1.3	* 4.6
Retail trade	10.4	6.0	16.4
Accommodation, cafes and restaurants	* 4.9	* 2.6	7.5
Transport and storage	* 2.3	* 0.7	* 3.0
Finance and insurance	* 1.8	* 1.2	* 3.0
Property and business services	6.1	* 2.8	8.9
Education	* 1.4	* 2.1	* 3.5
Health and community services	* 2.4	* 3.5	5.9
Cultural and recreational services	* 1.9	* 1.5	* 3.4
Personal and other services	* 1.1	* 1.9	* 3.0
Other industries (c)	6.7	* 4.4	11.1
Major occupation group—			
Managers and administrators	* 1.0	* 0.6	* 1.5
Professionals	6.3	* 3.7	10.0
Associate professionals	* 3.6	* 2.4	6.0
Tradespersons and related workers	13.9	* 2.2	16.1
Advanced clerical and service workers	* 0.8	* 2.8	* 3.6
Intermediate clerical, sales and service workers	7.4	10.7	18.1
Intermediate production and transport workers	9.9	* 1.1	11.0
Elementary clerical, sales and service workers	* 4.9	6.3	11.3
Labourers and related workers	21.6	* 4.9	26.6
<i>Had not worked full-time for two weeks or more in the last two years</i>	62.9	55.8	118.7
Looking for first job	13.3	10.6	23.9
Had worked at some time in the past	49.6	45.3	94.8
<i>Stood down</i>	* 3.0	* 2.2	* 5.1
Total unemployed	135.2	92.7	228.0

(a) Industry data are now classified according to the Australian and New Zealand Standard Industrial Classification. See the Explanatory Notes for more details.

(b) Occupation data are now classified according to the Second Edition of the Australian Standard Classification of Occupations (ASCO). See the Explanatory Notes for more details. (c) Comprises Mining; Electricity, gas and water supply; Communication services; and Government administration and defence.

UNEMPLOYMENT RATE BY AGE, NSW

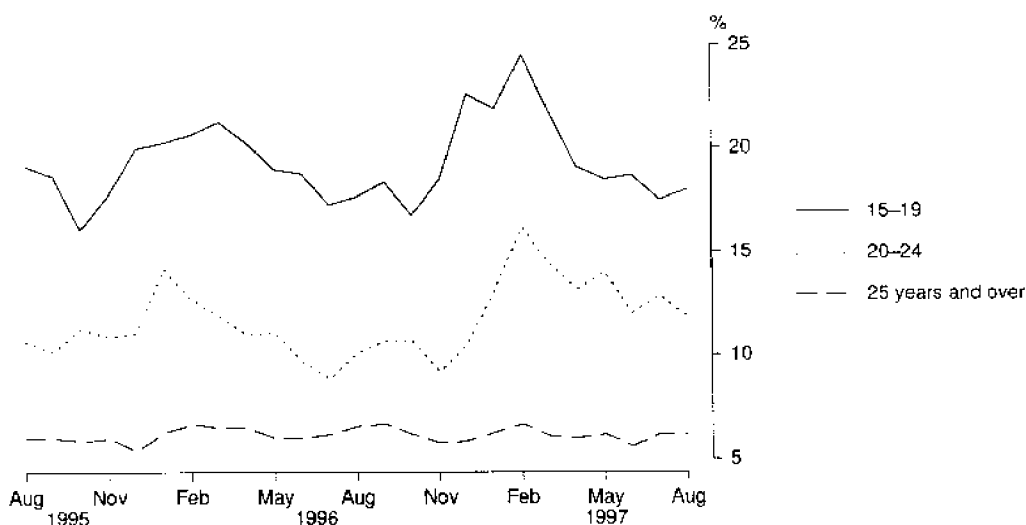


TABLE 13. UNEMPLOYED PERSONS: DURATION OF UNEMPLOYMENT, NSW

Duration of unemployment (weeks)	Males		Females		Persons				
	August 1996	August 1997	August 1996	August 1997	August 1996	May 1997	June 1997	July 1997	August 1997
— '000									
Under 52	100.4	85.8	67.4	66.1	167.9	159.1	144.7	157.5	151.9
Under 2	11.6	6.7	6.9	* 4.5	18.5	16.1	16.4	16.3	11.2
2 and under 4	12.0	10.3	8.6	10.0	20.6	22.0	18.3	19.9	20.3
4 and under 8	16.4	13.9	15.5	11.8	32.0	21.1	23.6	24.5	25.6
8 and under 13	13.6	11.4	7.3	6.2	20.9	22.4	17.0	20.2	17.6
13 and under 26	19.6	14.0	12.0	11.5	31.5	49.1	33.4	31.1	25.5
26 and under 39	21.5	25.1	13.1	16.1	34.6	22.7	27.1	35.1	41.2
39 and under 52	5.8	* 4.5	* 4.0	6.1	9.8	5.8	8.9	10.4	10.5
52 and over	47.4	49.4	22.8	26.6	70.2	86.2	76.7	80.6	76.0
52 and under 104	17.8	19.4	8.2	11.2	26.0	39.9	33.1	37.8	30.6
104 and over	29.6	30.0	14.6	15.5	44.2	46.3	43.6	42.8	45.5
Total unemployed	147.8	135.2	90.2	92.7	238.1	245.3	221.4	238.1	228.0
— Weeks —									
Average	62.5	64.3	47.9	58.9	57.0	57.4	57.3	55.2	62.1
Median	26	28	18	26	22	22	26	26	26

TABLE 14. UNEMPLOYED PERSONS: UNEMPLOYMENT RATE BY BIRTHPLACE AND PERIOD OF ARRIVAL, NSW (per cent)

	August 1996	May 1997	June 1997	July 1997	August 1997
Birthplace —					
Australia	7.3	7.6	7.2	7.5	7.1
Outside Australia	9.5	9.1	7.8	8.5	9.1
Main English speaking countries	5.9	4.9	6.0	6.7	6.7
Other countries	11.4	11.4	8.8	9.4	10.3
Period of arrival of overseas born —					
Before 1961	7.2	5.2	* 5.0	5.5	6.4
1961-1970	8.0	5.5	5.4	5.6	7.5
1971-1980	8.5	8.8	8.1	8.8	8.5
1981-1985	6.2	9.0	5.6	8.8	7.8
1986-1990	9.9	11.0	9.4	8.4	8.4
1991 to survey date	17.5	15.4	12.0	13.4	15.4
Total unemployment rate	7.9	8.0	7.3	7.8	7.7

UNEMPLOYMENT RATE BY PERIOD OF ARRIVAL OF OVERSEAS BORN, NSW, AUGUST 1997

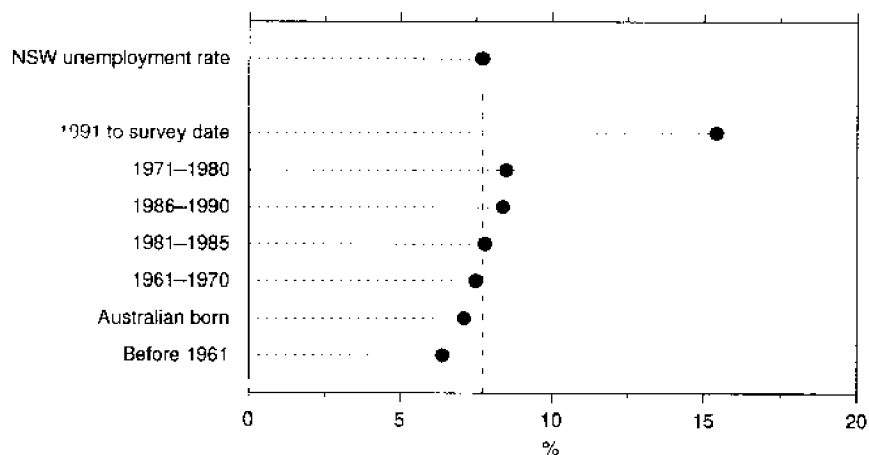


TABLE 15. UNEMPLOYED PERSONS: DURATION OF UNEMPLOYMENT BY AGE, NSW

Month	Duration of unemployment (weeks)					Total unemployed persons ('000)	Average duration (weeks)	Median duration (weeks)
	Under 13 ('000)	13 and under 26 ('000)	26 and under 39 ('000)	39 and under 104 ('000)	104 and over ('000)			
15-19								
1996— August	20.7	7.1	7.3	* 5.0	* 1.5	41.6	22.4	13
1997— June	20.4	6.9	6.3	5.7	* 1.9	41.2	23.5	13
July	19.2	5.5	8.4	* 5.0	* 2.0	40.0	25.4	13
August	15.3	6.3	8.2	5.8	* 1.6	37.2	26.9	18
20-24								
1996— August	14.4	5.6	7.0	5.6	* 5.1	37.6	41.3	19
1997— June	15.3	8.4	6.9	8.9	* 3.2	42.7	38.5	19
July	19.5	* 4.5	7.8	7.5	7.1	46.5	46.3	23
August	13.1	* 4.8	10.2	7.1	5.5	40.6	42.5	26
25-34								
1996— August	25.6	6.4	8.2	8.3	9.0	57.5	50.5	18
1997— June	18.5	8.6	* 5.0	11.1	11.8	55.0	60.0	26
July	21.6	9.5	6.5	15.6	10.5	63.6	53.8	26
August	19.9	5.4	7.0	11.6	11.7	55.6	65.2	26
35-44								
1996— August	16.2	5.5	6.1	6.8	9.3	43.9	69.3	26
1997— June	9.5	* 4.6	* 4.6	8.8	8.1	35.7	62.9	30
July	9.4	* 5.3	* 5.0	10.1	6.7	36.5	57.3	34
August	11.6	* 4.8	6.7	8.7	8.7	40.5	77.7	30
45 AND OVER								
1996— August	15.0	6.9	6.1	10.2	19.3	57.4	89.4	43
1997— June	11.5	* 4.9	* 4.2	7.6	18.6	46.8	96.7	52
July	11.2	6.4	7.4	10.0	16.5	51.5	86.7	40
August	14.7	* 4.2	9.1	8.0	18.1	54.1	86.1	36
TOTAL								
1996— August	91.9	31.5	34.6	35.9	44.2	238.1	57.0	22
1997— June	75.3	33.4	27.1	42.0	43.6	221.4	57.3	26
July	80.9	31.1	35.1	48.2	42.8	238.1	55.2	26
August	74.7	25.5	41.2	41.1	45.5	228.0	62.1	26

TABLE 16. LABOUR FORCE STATUS, SYDNEY (MSR)

Month	Employed			Unemployed			Labour force ('000)	Not in labour force ('000)	Civilian population aged 15 and over ('000)	Unemployment rate (per cent)	Participation rate (per cent)
	Full-time workers ('000)	Part-time workers ('000)	Total ('000)	Looking for full-time work ('000)	Looking for part-time work ('000)	Total ('000)					
MALES											
August—											
1993	853.2	85.2	938.4	96.1	12.4	108.5	1,046.8	405.3	1,452.2	10.4	72.1
1994	880.6	111.8	992.4	80.6	9.1	89.7	1,082.2	384.0	1,466.2	8.3	73.8
1995	909.7	96.2	1,006.0	71.2	7.4	78.7	1,084.6	392.3	1,476.9	7.3	73.4
1996—											
June	897.6	114.3	1,011.9	70.2	11.4	81.6	1,093.5	391.5	1,484.9	7.5	73.6
July	913.4	112.5	1,025.9	65.3	9.3	74.6	1,100.5	386.3	1,486.7	6.8	74.0
August	902.7	119.1	1,021.8	69.8	12.0	81.8	1,103.6	384.9	1,488.5	7.4	74.1
1997—											
May	911.5	117.8	1,029.2	67.7	9.6	77.3	1,106.5	393.5	1,500.1	7.0	73.8
June	914.3	112.8	1,027.1	61.6	7.8	69.4	1,096.5	404.9	1,501.4	6.3	73.0
July	919.4	106.7	1,026.1	68.6	9.1	77.6	1,103.7	399.4	1,503.1	7.0	73.4
August	902.5	107.7	1,010.2	61.8	9.6	71.4	1,081.6	423.2	1,504.8	6.6	71.9
MARRIED FEMALES											
August—											
1993	240.7	177.2	417.9	18.4	9.3	27.7	445.6	378.2	823.8	6.2	54.1
1994	255.6	179.1	434.7	13.8	7.1	21.0	455.7	390.1	845.8	4.6	53.9
1995	269.8	185.9	455.7	14.6	7.7	22.3	478.0	378.8	856.8	4.7	55.8
1996—											
June	254.8	191.4	446.1	15.3	9.2	24.6	470.7	395.3	866.0	5.2	54.4
July	262.9	187.7	450.5	13.8	6.3	20.1	470.7	393.7	864.4	4.3	54.4
August	264.3	188.0	452.3	12.3	8.8	21.1	473.3	388.6	861.9	4.5	54.9
1997—											
May	267.4	180.7	448.1	11.9	10.5	22.4	470.5	379.8	850.3	4.8	55.3
June	272.0	184.5	456.5	10.0	7.1	17.1	473.6	379.5	853.1	3.6	55.5
July	276.2	176.1	452.4	11.1	9.4	20.5	472.9	382.3	855.2	4.3	55.3
August	270.3	186.6	456.9	10.7	8.4	19.1	476.0	389.8	865.9	4.0	55.0
ALL FEMALES											
August—											
1993	463.9	261.8	725.7	49.2	19.5	68.7	794.4	720.8	1,515.2	8.6	52.4
1994	478.9	275.0	753.9	39.4	16.5	55.9	809.8	720.0	1,529.8	6.9	52.9
1995	494.9	277.4	772.3	34.5	19.2	53.7	826.0	713.5	1,539.4	6.5	53.7
1996—											
June	491.0	293.2	784.2	32.0	18.2	50.2	834.3	714.1	1,548.5	6.0	53.9
July	507.9	285.5	793.4	33.5	15.0	48.4	841.8	708.9	1,550.7	5.8	54.3
August	501.3	285.0	786.3	30.4	16.9	47.3	833.6	719.2	1,552.8	5.7	53.7
1997—											
May	503.2	293.7	796.8	35.9	19.9	55.8	852.7	713.5	1,566.2	6.5	54.4
June	503.8	289.8	793.6	32.1	15.3	47.4	841.0	726.6	1,567.6	5.6	53.6
July	518.2	283.5	801.7	30.6	20.4	51.0	852.7	716.5	1,569.2	6.0	54.3
August	495.4	291.6	787.0	33.2	17.1	50.2	837.2	733.7	1,570.9	6.0	53.3
PERSONS											
August—											
1993	1,317.1	347.0	1,664.1	145.3	31.9	177.2	1,841.2	1,126.1	2,967.3	9.6	62.0
1994	1,359.5	386.8	1,746.3	120.1	25.6	145.7	1,892.0	1,104.1	2,996.1	7.7	63.1
1995	1,404.6	373.6	1,778.3	105.7	26.6	132.3	1,910.6	1,105.8	3,016.4	6.9	63.3
1996—											
June	1,388.6	407.5	1,796.1	102.2	29.6	131.7	1,927.8	1,105.6	3,033.4	6.8	63.6
July	1,421.3	397.9	1,819.2	98.8	24.2	123.0	1,942.3	1,095.1	3,037.4	6.3	63.9
August	1,404.0	404.1	1,808.1	100.2	29.0	129.1	1,937.2	1,104.1	3,041.3	6.7	63.7
1997—											
May	1,414.6	411.4	1,826.1	103.6	29.5	133.1	1,959.2	1,107.0	3,066.2	6.8	63.9
June	1,418.1	402.6	1,820.7	93.7	23.1	116.8	1,937.5	1,131.5	3,069.0	6.0	63.1
July	1,437.6	390.2	1,827.8	99.2	29.5	128.6	1,956.5	1,115.9	3,072.3	6.6	63.7
August	1,397.9	399.3	1,797.1	95.0	26.7	121.6	1,918.8	1,156.9	3,075.7	6.3	62.4

TABLE 17. LABOUR FORCE STATUS, BALANCE OF NSW (MSR)

Month	Employed		Unemployed			Labour force (<i>'000</i>)	Not in labour force (<i>'000</i>)	Civilian population aged 15 and over (<i>'000</i>)	Unemp- loyment rate (per cent)	Partici- pation rate (per cent)	
	Full-time workers (<i>'000</i>)	Part-time workers (<i>'000</i>)	Total (<i>'000</i>)	Looking for full- time work (<i>'000</i>)	Looking for part- time work (<i>'000</i>)						
MALES											
August—											
1993	462.6	52.1	514.6	76.9	* 4.0	80.9	595.5	262.5	858.0	13.6	69.4
1994	465.7	61.6	527.4	60.7	* 3.3	64.0	591.4	275.4	866.8	10.8	68.2
1995	493.3	71.5	564.8	51.1	* 4.7	55.8	620.6	264.0	884.6	9.0	70.2
1996—											
June	506.7	70.2	576.9	49.3	7.7	57.1	633.9	270.4	904.3	9.0	70.1
July	508.5	61.0	569.5	50.5	7.7	58.2	627.7	278.1	905.8	9.3	69.3
August	499.5	66.2	565.7	59.0	7.1	66.0	631.8	275.6	907.3	10.5	69.6
1997—											
May	496.6	71.5	568.1	60.0	6.1	66.0	634.2	283.9	918.1	10.4	69.1
June	502.1	69.7	571.8	55.3	* 4.5	59.8	631.6	287.7	919.3	9.5	68.7
July	502.9	71.4	574.3	61.7	6.0	67.8	642.1	278.4	920.5	10.6	69.8
August	487.8	69.6	557.4	58.6	5.3	63.8	621.2	300.5	921.7	10.3	67.4
MARRIED FEMALES											
August—											
1993	116.6	121.1	237.7	12.3	5.3	17.6	255.3	262.2	517.5	6.9	49.3
1994	129.7	113.2	242.9	12.6	* 4.9	17.5	260.3	277.4	537.7	6.7	48.4
1995	140.3	125.6	265.8	10.8	* 4.4	14.8	280.7	262.2	542.9	5.3	51.7
1996—											
June	141.1	135.7	276.9	8.5	5.3	13.9	290.7	260.6	551.3	4.8	52.7
July	141.2	124.4	265.6	11.9	* 5.1	17.0	282.6	271.3	553.9	6.0	51.0
August	136.6	127.3	263.9	10.2	5.3	15.5	279.4	276.6	556.0	5.5	50.2
1997—											
May	133.0	132.1	265.1	10.7	6.2	16.9	282.1	273.5	555.6	6.0	50.8
June	128.1	134.8	262.8	11.8	* 4.0	15.8	278.6	277.1	555.8	5.7	50.1
July	131.5	137.3	268.8	9.5	* 4.3	13.8	282.6	282.5	565.1	4.9	50.0
August	127.5	125.7	253.3	14.7	* 2.8	17.5	270.8	283.5	554.3	6.5	48.9
ALL FEMALES											
August—											
1993	190.4	175.7	366.1	29.6	11.0	40.6	406.7	470.7	877.5	10.0	46.4
1994	197.4	163.3	360.7	35.4	10.1	45.4	406.1	482.1	888.2	11.2	45.7
1995	213.9	194.5	408.4	25.3	13.2	38.5	446.9	458.4	905.3	8.6	49.4
1996—											
June	221.0	202.8	423.9	23.2	13.4	36.6	460.5	465.4	925.9	8.0	49.7
July	223.6	188.3	412.0	29.1	13.4	42.5	454.4	473.2	927.7	9.3	49.0
August	219.4	187.3	406.7	29.6	13.3	42.9	449.6	479.8	929.5	9.5	48.4
1997—											
May	217.2	192.6	409.8	31.3	14.8	46.1	455.9	486.0	941.8	10.1	48.4
June	200.6	198.3	398.8	32.0	12.9	44.9	443.7	499.4	943.1	10.1	47.0
July	211.3	200.1	411.4	31.2	10.5	41.7	453.1	491.2	944.4	9.2	48.0
August	208.6	187.4	395.9	32.1	10.4	42.5	438.4	507.1	945.6	9.7	46.4
PERSONS											
August—											
1993	653.0	227.7	880.7	106.5	14.9	121.5	1,002.2	733.3	1,735.5	12.1	57.7
1994	663.1	224.9	888.0	96.1	13.3	109.5	997.5	757.5	1,755.0	11.0	56.8
1995	707.2	266.0	973.2	76.3	18.0	94.3	1,067.5	722.4	1,789.9	8.8	59.6
1996—											
June	727.7	273.0	1,000.7	72.5	21.2	93.7	1,094.4	735.8	1,830.2	8.6	59.8
July	732.1	249.4	981.5	79.6	21.1	100.7	1,082.2	751.3	1,833.5	9.3	59.0
August	719.0	253.5	972.4	88.6	20.4	109.0	1,081.4	755.4	1,836.8	10.1	58.9
1997—											
May	713.8	264.1	977.9	91.3	20.8	112.1	1,090.0	769.9	1,859.9	10.3	58.6
June	702.7	268.0	970.7	87.3	17.4	104.6	1,075.3	787.2	1,862.5	9.7	57.7
July	714.3	271.5	985.8	92.9	16.5	109.4	1,095.2	769.7	1,864.9	10.0	58.7
August	696.4	256.9	953.3	90.6	15.7	106.3	1,059.7	807.6	1,867.3	10.0	56.7

**TABLE 18. EMPLOYED PERSONS: INDUSTRY (a) AND OCCUPATION (b)
SYDNEY (MSR) AND BALANCE OF NSW (MSR), AUGUST 1997
(^{'000})**

<i>Industry division and Major occupation group</i>	<i>Males</i>	<i>Females</i>	<i>Persons</i>
SYDNEY (MSR)			
Industry—			
Agriculture, forestry and fishing	7.0	* 2.8	9.8
Mining	* 2.2	* 0.6	* 2.8
Manufacturing	188.4	87.6	276.0
Electricity, gas and water supply	11.2	* 1.9	13.1
Construction	110.4	17.0	127.4
Wholesale trade	90.1	44.9	135.0
Retail trade	116.6	106.2	222.7
Accommodation, cafes and restaurants	43.2	35.9	79.0
Transport and storage	73.4	23.5	96.9
Communication services	28.9	14.2	43.1
Finance and insurance	43.9	52.5	96.4
Property and business services	130.3	102.0	232.3
Government administration and defence	32.2	24.2	56.4
Education	35.5	87.8	123.3
Health and community services	38.7	127.4	166.1
Cultural and recreational services	26.2	21.5	47.7
Personal and other services	31.9	37.1	69.0
Occupation—			
Managers and administrators	91.3	25.3	116.7
Professionals	179.5	191.4	370.8
Associate professionals	122.9	67.5	190.4
Tradespersons and related workers	197.7	17.2	214.9
Advanced clerical and service workers	10.3	91.0	101.3
Intermediate clerical, sales and service workers	102.2	220.5	322.7
Intermediate production and transport workers	140.1	20.6	160.7
Elementary clerical, sales and service workers	69.6	101.0	170.6
Labourers and related workers	96.6	52.5	149.1
Total employed	1,010.2	787.0	1,797.1
BALANCE OF NSW (MSR)			
Industry—			
Agriculture, forestry and fishing	66.6	30.4	97.0
Mining	25.0	* 1.7	26.7
Manufacturing	108.6	24.9	133.5
Electricity, gas and water supply	8.9	* 0.6	9.5
Construction	48.5	* 4.5	53.0
Wholesale trade	28.1	8.3	36.4
Retail trade	71.2	77.9	149.0
Accommodation, cafes and restaurants	22.9	39.5	62.4
Transport and storage	29.3	6.3	35.7
Communication services	7.9	* 4.8	12.7
Finance and insurance	8.4	15.3	23.8
Property and business services	39.0	29.7	68.7
Government administration and defence	22.6	14.5	37.1
Education	21.6	47.6	69.1
Health and community services	22.8	67.5	90.3
Cultural and recreational services	5.8	7.4	13.2
Personal and other services	20.1	15.2	35.3
Occupation—			
Managers and administrators	69.7	21.4	91.1
Professionals	65.2	74.0	139.3
Associate professionals	61.3	32.1	93.4
Tradespersons and related workers	117.2	12.4	129.6
Advanced clerical and service workers	* 1.8	32.9	34.7
Intermediate clerical, sales and service workers	36.3	100.4	136.7
Intermediate production and transport workers	85.7	12.8	98.6
Elementary clerical, sales and service workers	31.5	62.3	93.8
Labourers and related workers	88.5	47.6	136.1
Total employed	557.4	395.9	953.3

(a) Industry data are now classified according to the Australian and New Zealand Standard Industrial Classification. See the Explanatory Notes for more details.

(b) Occupation data are now classified according to the Second Edition of the Australian Standard Classification of Occupations (ASCO). See the Explanatory Notes for more details.

TABLE 19. LABOUR FORCE STATUS (a), REGIONS OF NSW AND ACT

Month	Employed ('000)	Unemployed ('000)	Labour force ('000)	Not in labour force ('000)	Unemployment rate (per cent)	Participation rate (per cent)	
INNER SYDNEY AND INNER WESTERN SYDNEY (SRs)							
MALES	1996— August	118.0	10.0	128.0	50.1	7.8	71.9
	1997— June	116.6	8.8	125.4	51.8	7.0	70.7
	July	125.3	7.1	132.4	55.0	5.3	70.7
	August	111.2	9.7	120.9	61.2	8.1	66.4
FEMALES	1996— August	87.3	4.6	91.9	70.7	5.1	56.5
	1997— June	90.2	6.3	96.5	76.1	6.5	55.9
	July	93.0	8.7	101.7	74.4	8.5	57.8
	August	85.9	5.8	91.6	78.2	6.3	53.9
PERSONS	1996— August	205.3	14.6	220.0	120.8	6.6	64.5
	1997— June	206.8	15.1	221.8	127.9	6.8	63.4
	July	218.3	15.7	234.1	129.4	6.7	64.4
	August	197.0	15.5	212.5	139.4	7.3	60.4
INNER SYDNEY (SR)							
MALES	1996— August	72.3	5.5	77.8	31.2	7.1	71.4
	1997— June	81.8	5.7	87.5	33.3	6.5	72.5
	July	88.2	* 3.8	91.9	36.6	* 4.1	71.5
	August	74.6	5.3	79.8	39.4	6.6	67.0
FEMALES	1996— August	58.6	* 1.7	60.3	41.0	* 2.8	59.5
	1997— June	60.0	* 3.6	63.6	41.8	* 5.7	60.4
	July	60.4	4.2	64.6	42.3	6.5	60.4
	August	54.1	4.3	58.4	45.1	7.4	56.4
PERSONS	1996— August	130.9	7.2	138.1	72.2	5.2	65.7
	1997— June	141.8	9.3	151.2	75.0	6.2	66.8
	July	148.6	7.9	156.6	78.9	5.1	66.5
	August	128.7	9.6	138.3	84.5	6.9	62.1
EASTERN SUBURBS (SR)							
MALES	1996— August	69.0	* 2.7	71.7	22.7	* 3.8	76.0
	1997— June	65.8	* 3.0	68.8	26.6	* 4.3	72.1
	July	66.4	* 2.4	68.7	26.1	* 3.4	72.5
	August	65.5	4.4	69.9	28.7	6.3	70.9
FEMALES	1996— August	57.5	* 1.5	59.0	38.6	* 2.5	60.4
	1997— June	54.2	* 2.2	56.4	35.5	* 3.8	61.4
	July	53.2	* 1.2	54.3	38.2	* 2.1	58.7
	August	53.4	* 1.6	54.9	40.3	* 2.8	57.7
PERSONS	1996— August	126.5	4.2	130.7	61.3	3.2	68.1
	1997— June	120.0	5.1	125.1	62.1	4.1	66.8
	July	119.5	3.5	123.1	64.3	2.9	65.7
	August	118.9	5.9	124.9	69.0	4.8	64.4

TABLE 19. LABOUR FORCE STATUS (a), REGIONS OF NSW AND ACT—continued

	Month	Employed (<i>'000</i>)	Unemployed (<i>'000</i>)	Labour force (<i>'000</i>)	Not in labour force (<i>'000</i>)	Unemp- loyment rate (per cent)	Partici- pation rate (per cent)
ST GEORGE—SUTHERLAND (SR)							
MALES	1996— August	123.3	8.0	131.3	42.8	6.1	75.4
	1997— June	113.0	6.4	119.4	36.6	5.4	76.6
	July	116.7	6.9	123.5	37.7	5.5	76.6
	August	109.2	3.8	113.1	42.9	3.4	72.5
FEMALES	1996— August	92.7	4.0	96.7	75.0	4.2	56.3
	1997— June	93.1	3.6	96.7	73.1	3.7	57.0
	July	93.7	4.4	98.1	76.8	4.5	56.1
	August	86.3	4.9	91.2	79.9	5.3	53.3
PERSONS	1996— August	216.0	12.0	228.0	117.8	5.3	65.9
	1997— June	206.1	10.0	216.1	109.6	4.6	66.3
	July	210.4	11.2	221.6	114.5	5.1	65.9
	August	195.6	8.7	204.3	122.8	4.3	62.5
CANTERBURY—BANKSTOWN (SR)							
MALES	1996— August	74.4	10.1	84.5	37.4	11.9	69.3
	1997— June	66.8	5.9	72.7	40.7	8.1	64.1
	July	67.2	8.8	76.0	40.1	11.6	65.5
	August	68.3	8.2	76.5	41.2	10.8	65.0
FEMALES	1996— August	56.3	3.9	60.2	63.8	6.5	48.5
	1997— June	48.2	3.0	51.2	70.2	5.9	42.1
	July	48.6	3.8	52.4	68.8	7.3	43.3
	August	55.5	4.2	59.7	67.6	7.1	46.9
PERSONS	1996 August	130.7	14.0	144.7	101.2	9.7	58.8
	1997 June	115.0	8.9	123.9	111.0	7.2	52.8
	July	115.8	12.6	128.4	108.8	9.8	54.1
	August	123.7	12.5	136.2	108.8	9.2	55.6
FAIRFIELD—LIVERPOOL AND OUTER SOUTH WESTERN SYDNEY (SRs)							
MALES	1996— August	135.3	18.0	153.2	43.5	11.7	77.9
	1997 June	134.7	15.8	150.5	52.7	10.5	74.1
	July	134.9	18.1	153.0	46.2	11.8	76.8
	August	132.0	15.8	147.8	52.4	10.7	73.8
FEMALES	1996— August	85.2	12.1	97.3	99.4	12.4	49.5
	1997— June	91.8	11.2	103.0	96.4	10.8	51.6
	July	92.7	14.1	106.8	96.2	13.2	52.6
	August	88.4	9.6	98.0	103.1	9.8	48.7
PERSONS	1996— August	220.5	30.1	250.5	142.9	12.0	63.7
	1997 June	226.5	27.0	253.5	149.1	10.7	63.0
	July	227.6	32.2	259.7	142.4	12.4	64.6
	August	220.4	25.4	245.8	155.5	10.3	61.2

TABLE 19. LABOUR FORCE STATUS (a), REGIONS OF NSW AND ACT—continued

Month		Employed ('000)	Unemployed ('000)	Labour force ('000)	Not in labour force ('000)	Unemp- loyment rate (per cent)	Partici- pation rate (per cent)
FAIRFIELD-LIVERPOOL (SR)							
MALES	1996— August	71.9	14.0	85.9	29.8	16.3	74.3
	1997— June	74.3	11.3	85.6	38.9	13.2	68.8
	July	73.9	13.5	87.4	33.1	15.4	72.5
	August	73.9	12.3	86.2	38.3	14.3	69.2
	FEMALES	1996— August	42.2	7.2	49.4	59.2	14.5
1997— June	49.0	7.9	56.9	62.8	13.9	47.5	
July	50.9	10.5	61.4	60.7	17.1	50.3	
August	49.4	6.7	56.1	67.0	12.0	45.6	
PERSONS	1996— August	114.1	21.2	135.3	89.0	15.7	60.3
	1997— June	123.3	19.2	142.6	101.7	13.5	58.4
	July	124.8	24.0	148.8	93.8	16.1	61.3
	August	123.3	19.0	142.3	105.3	13.3	57.5
	CENTRAL WESTERN SYDNEY (SR)						
MALES	1996— August	65.5	9.0	74.6	32.1	12.1	69.9
	1997— June	70.9	6.1	77.0	36.4	8.0	67.9
	July	68.3	7.5	75.9	36.2	9.9	67.7
	August	66.7	6.0	72.7	30.7	8.3	70.3
	FEMALES	1996— August	46.1	4.9	51.0	58.1	9.6
1997— June	44.3	4.7	49.0	55.7	9.6	46.8	
July	46.7	3.6	50.3	52.9	7.2	48.8	
August	46.3	5.8	52.1	51.3	11.2	50.4	
PERSONS	1996— August	111.6	13.9	125.6	90.2	11.1	58.2
	1997— June	115.2	10.8	126.0	92.1	8.6	57.8
	July	115.1	11.2	126.2	89.0	8.9	58.6
	August	113.0	11.8	124.8	82.0	9.5	60.3
	OUTER WESTERN SYDNEY (SR)						
MALES	1996— August	76.2	6.2	82.4	21.3	7.6	79.4
	1997— June	80.6	7.1	87.7	23.3	8.1	79.0
	July	76.7	7.2	83.9	20.6	8.5	80.2
	August	70.6	4.6	75.2	26.4	6.1	74.0
	FEMALES	1996— August	60.2	* 3.0	63.2	49.9	* 4.7
1997— June	66.6	* 2.4	69.0	55.9	* 3.4	55.2	
July	62.2	* 3.5	65.7	55.1	* 5.4	54.4	
August	57.7	* 1.8	59.5	57.1	* 3.1	51.0	
PERSONS	1996— August	136.4	9.2	145.6	71.2	6.3	67.2
	1997— June	147.2	9.5	156.7	79.2	6.1	66.4
	July	138.8	10.7	149.6	75.7	7.2	66.4
	August	128.3	6.4	134.7	83.5	4.8	61.7

TABLE 19. LABOUR FORCE STATUS (a), REGIONS OF NSW AND ACT—continued

	Month	Employed (<i>'000</i>)	Unemployed (<i>'000</i>)	Labour force (<i>'000</i>)	Not in labour force (<i>'000</i>)	Unemp- loyment rate (per cent)	Partici- pation rate (per cent)
BLACKTOWN—BAULKHAM HILLS (SR)							
MALES	1996— August	91.8	4.3	96.1	28.5	4.5	77.1
	1997— June	101.7	6.3	108.0	31.9	5.8	77.2
	July	96.0	5.7	101.7	31.3	5.6	76.5
	August	103.5	6.5	110.0	33.3	5.9	76.8
FEMALES	1996— August	78.5	3.0	81.5	57.2	3.7	58.7
	1997— June	76.5	5.1	81.6	66.2	6.3	55.2
	July	80.5	2.6	83.1	57.8	3.1	59.0
	August	77.3	7.0	84.3	60.4	8.3	58.3
PERSONS	1996— August	170.4	7.3	177.6	85.7	4.1	67.4
	1997— June	178.2	11.4	189.6	98.0	6.0	65.9
	July	176.5	8.3	184.8	89.1	4.5	67.5
	August	180.8	13.5	194.3	93.6	6.9	67.5
LOWER NORTHERN SYDNEY (SR)							
MALES	1996— August	75.6	* 2.1	77.7	29.3	* 2.7	72.6
	1997— June	80.9	* 3.3	84.2	28.1	* 3.9	75.0
	July	82.3	5.1	87.4	26.5	5.9	76.8
	August	83.8	* 3.5	87.2	27.2	* 4.0	76.2
FEMALES	1996— August	68.2	* 1.4	69.7	50.9	* 2.0	57.8
	1997— June	75.0	* 2.4	77.4	49.7	* 3.1	60.9
	July	78.5	* 2.1	80.6	49.5	* 2.6	61.9
	August	77.4	* 2.8	80.2	50.8	* 3.5	61.2
PERSONS	1996— August	143.8	* 3.6	147.4	80.2	* 2.4	64.8
	1997— June	155.9	5.7	161.6	77.9	3.5	67.5
	July	160.8	7.2	167.9	76.0	4.3	68.8
	August	161.2	6.3	167.5	78.0	3.7	68.2
HORNSBY—KU-RING-GAI (SR)							
MALES	1996— August	69.0	* 3.3	72.3	25.3	* 4.5	74.1
	1997— June	71.6	* 1.2	72.7	26.2	* 1.6	73.5
	July	72.8	* 1.1	73.8	28.2	* 1.4	72.3
	August	73.6	* 2.5	76.1	27.4	* 3.3	73.6
FEMALES	1996— August	52.4	* 1.5	53.9	52.3	* 2.7	50.7
	1997— June	53.8	* 1.5	55.3	46.3	* 2.7	54.4
	July	53.8	* 1.3	55.1	50.2	* 2.3	52.3
	August	58.7	* 0.7	59.4	47.0	* 1.1	55.8
PERSONS	1996— August	121.5	4.7	126.2	77.6	3.7	61.9
	1997— June	125.4	* 2.7	128.1	72.5	* 2.1	63.8
	July	126.6	* 2.3	129.0	78.5	* 1.8	62.2
	August	132.3	* 3.2	135.5	74.3	* 2.3	64.6

TABLE 19. LABOUR FORCE STATUS (a), REGIONS OF NSW AND ACT—continued

	Month	Employed (<i>'000</i>)	Unemployed (<i>'000</i>)	Labour force (<i>'000</i>)	Not in labour force (<i>'000</i>)	Unemp- loyment rate (per cent)	Partici- pation rate (per cent)
NORTHERN BEACHES (SR) (b)							
MALES	1996— August	59.0	2.4	61.4	20.5	3.9	75.0
	1997— June	64.5	2.8	67.3	19.2	4.1	77.8
	July	62.3	4.4	66.7	15.8	6.6	80.9
	August	66.7	2.9	69.5	13.0	4.1	84.2
FEMALES	1996— August	52.4	* 1.8	54.2	46.9	* 3.3	53.6
	1997— June	50.8	* 1.0	51.7	47.1	* 1.8	52.4
	July	51.0	* 0.9	51.9	36.8	* 1.8	58.5
	August	52.8	* 1.9	54.6	33.5	* 3.4	62.0
PERSONS	1996— August	111.4	4.1	115.6	67.4	3.6	63.2
	1997— June	115.3	3.7	119.0	66.3	3.1	64.2
	July	113.3	5.4	118.6	52.6	4.5	69.3
	August	119.5	4.7	124.2	46.5	3.8	72.8
GOSFORD-WYONG (SR)							
MALES	1996— August	64.6	5.7	70.3	31.4	8.1	69.1
	1997— June	60.1	* 2.8	62.9	31.3	* 4.4	66.7
	July	57.3	* 3.4	60.7	35.7	* 5.7	63.0
	August	59.1	* 3.5	62.7	38.8	* 5.6	61.8
FEMALES	1996— August	49.4	5.7	55.0	56.3	10.3	49.4
	1997— June	49.2	4.1	53.3	54.4	7.7	49.5
	July	47.8	4.8	52.7	59.7	9.2	46.9
	August	47.4	4.2	51.6	64.6	8.1	44.4
PERSONS	1996— August	114.0	11.3	125.3	87.6	9.1	58.8
	1997— June	109.3	6.9	116.2	85.8	5.9	57.5
	July	105.1	8.3	113.4	95.4	7.3	54.3
	August	106.5	7.7	114.2	103.4	6.8	52.5
HUNTER (SR)							
MALES	1996— August	124.2	18.5	142.6	67.4	12.9	67.9
	1997— June	138.5	18.6	157.1	60.8	11.8	72.1
	July	133.9	21.1	155.0	62.8	13.6	71.2
	August	127.2	15.9	143.1	63.8	11.1	69.2
FEMALES	1996— August	87.9	10.0	97.9	115.6	10.3	45.9
	1997— June	94.1	12.6	106.8	112.2	11.8	48.8
	July	91.6	11.4	103.0	115.2	11.1	47.2
	August	84.4	9.4	93.8	114.2	10.0	45.1
PERSONS	1996— August	212.1	28.5	240.6	183.0	11.9	56.8
	1997— June	232.7	31.2	263.9	172.9	11.8	60.4
	July	225.5	32.5	258.0	178.0	12.6	59.2
	August	211.6	25.3	236.9	177.9	10.7	57.1

TABLE 19. LABOUR FORCE STATUS (a), REGIONS OF NSW AND ACT *continued*

	<i>Month</i>	<i>Employed ('000)</i>	<i>Unemployed ('000)</i>	<i>Labour force ('000)</i>	<i>Not in labour force ('000)</i>	<i>Unemp- loyment rate (per cent)</i>	<i>Partici- pation rate (per cent)</i>
NEWCASTLE (SRS)							
MALES	1996—						
	August	107.8	15.1	122.8	60.3	12.3	67.1
	1997—						
	June	118.0	16.5	134.5	53.8	12.3	71.4
	July	113.6	19.0	132.6	56.5	14.3	70.1
	August	107.0	14.2	121.2	57.2	11.7	67.9
FEMALES	1996—						
	August	73.4	8.9	82.2	104.6	10.8	44.0
	1997—						
	June	78.5	11.9	90.4	99.2	13.2	47.7
	July	76.2	11.1	87.3	102.6	12.7	45.9
	August	71.3	8.4	79.7	103.2	10.6	43.6
PERSONS	1996—						
	August	181.1	23.9	205.0	164.9	11.7	55.4
	1997—						
	June	196.5	28.4	224.9	153.0	12.6	59.5
	July	189.7	30.1	219.8	159.1	13.7	58.0
	August	178.3	22.6	200.9	160.3	11.3	55.6
ILLAWARRA AND SOUTH EASTERN (SRs) (d)							
MALES	1996—						
	August	136.1	14.1	150.2	70.2	9.4	68.1
	1997—						
	June	154.6	13.4	168.0	71.2	8.0	70.2
	July	155.4	15.6	171.0	72.9	9.1	70.1
	August	155.0	16.9	171.8	78.4	9.8	68.7
FEMALES	1996—						
	August	110.1	11.2	121.3	116.8	9.2	50.9
	1997—						
	June	105.3	12.2	117.5	125.0	10.4	48.5
	July	109.3	12.5	121.8	126.8	10.2	49.0
	August	108.9	10.2	119.0	129.1	8.5	48.0
PERSONS	1996—						
	August	246.2	25.3	271.5	187.0	9.3	59.2
	1997—						
	June	259.9	25.6	285.5	196.2	9.0	59.3
	July	264.7	28.1	292.8	199.7	9.6	59.5
	August	263.8	27.0	290.9	207.5	9.3	58.4
ILLAWARRA (SR)							
MALES	1996—						
	August	95.5	12.1	107.6	51.6	11.3	67.6
	1997—						
	June	100.7	8.5	109.2	49.1	7.8	69.0
	July	101.2	10.7	111.9	51.3	9.5	68.6
	August	101.6	11.8	113.4	55.5	10.4	67.2
FEMALES	1996—						
	August	71.7	7.9	79.6	82.0	9.9	49.3
	1997—						
	June	66.1	9.7	75.8	92.2	12.8	45.1
	July	68.6	9.2	77.8	97.4	11.9	44.4
	August	69.1	7.6	76.7	97.6	9.8	44.0
PERSONS	1996—						
	August	167.2	20.0	187.1	133.5	10.7	58.4
	1997—						
	June	166.8	18.2	185.0	141.2	9.8	56.7
	July	169.8	19.9	189.7	148.6	10.5	56.1
	August	170.7	19.4	190.1	153.1	10.2	55.4

TABLE 19. LABOUR FORCE STATUS (a), REGIONS OF NSW AND ACT *continued*

	Month	Employed (<i>'000</i>)	Unemployed (<i>'000</i>)	Labour force (<i>'000</i>)	Not in labour force (<i>'000</i>)	Unemp- loyment rate (per cent)	Partici- pation rate (per cent)
WOLLONGONG (SRs)							
MALES	1996— August	75.2	9.1	84.3	33.4	10.8	71.6
	1997— June	79.9	6.2	86.2	31.7	7.2	73.1
	July	78.5	6.5	85.0	35.0	7.7	70.8
	August	77.1	9.1	86.2	37.6	10.5	69.6
FEMALES	1996— August	55.1	4.3	59.4	58.3	7.2	50.5
	1997— June	50.5	6.1	56.6	67.5	10.8	45.6
	July	52.4	6.1	58.5	69.8	10.5	45.6
	August	52.4	5.8	58.2	69.1	10.0	45.7
PERSONS	1996— August	130.3	13.3	143.7	91.7	9.3	61.0
	1997— June	130.4	12.4	142.8	99.2	8.6	59.0
	July	130.9	12.7	143.6	104.8	8.8	57.8
	August	129.5	14.9	144.4	106.7	10.3	57.5
RICHMOND-TWEED AND MID-NORTH COAST (SRs)							
MALES	1996— August	92.1	18.2	110.4	60.1	16.5	64.7
	1997— June	91.5	12.9	104.4	71.3	12.4	59.4
	July	91.4	15.3	106.7	66.7	14.4	61.5
	August	86.5	14.7	101.2	74.8	14.5	57.5
FEMALES	1996— August	68.4	10.4	78.8	102.9	13.2	43.4
	1997— June	69.6	9.4	79.0	112.8	11.9	41.2
	July	73.6	9.3	82.8	110.1	11.2	42.9
	August	67.8	9.8	77.6	118.1	12.7	39.7
PERSONS	1996— August	160.5	28.6	189.2	163.0	15.1	53.7
	1997— June	161.1	22.3	183.4	184.1	12.2	49.9
	July	164.9	24.6	189.5	176.8	13.0	51.7
	August	154.3	24.5	178.8	192.9	13.7	48.1
NORTHERN, FAR WEST-NORTH WESTERN AND CENTRAL WEST (SRs) (c)							
MALES	1996— August	125.1	8.3	133.4	47.7	6.2	73.7
	1997— June	118.3	9.3	127.6	56.2	7.3	69.4
	July	120.1	11.3	131.4	47.9	8.6	73.3
	August	117.9	11.1	129.0	56.0	8.6	69.8
FEMALES	1996— August	86.2	6.5	92.6	88.7	7.0	51.1
	1997— June	82.4	5.5	87.9	96.6	6.3	47.7
	July	84.4	* 4.3	88.6	88.5	* 4.8	50.0
	August	85.7	8.2	93.8	94.2	8.7	49.9
PERSONS	1996— August	211.3	14.8	226.1	136.4	6.5	62.4
	1997— June	200.7	14.8	215.5	152.7	6.9	58.5
	July	204.5	15.6	220.0	136.4	7.1	61.7
	August	203.6	19.3	222.9	150.2	8.6	59.7

TABLE 19. LABOUR FORCE STATUS (a), REGIONS OF NSW AND ACT—continued

Month	Employed ('000)	Unemployed ('000)	Labour force ('000)	Not in labour force ('000)	Unemployment rate (per cent)	Participation rate (per cent)
MURRAY-MURRUMBIDGEE (SR)						
MALES	1996					
	August	82.0	5.9	88.0	25.9	77.3
	1997					
	June	64.4	4.9	69.4	24.7	73.7
	July	69.0	* 4.1	73.1	24.2	* 5.7
	August	65.6	5.0	70.6	24.4	74.4
FEMALES	1996—					
	August	50.3	* 3.9	54.2	51.2	* 7.2
	1997—					
	June	44.9	* 4.5	49.4	46.9	* 9.1
	July	50.4	* 3.9	54.4	45.0	* 7.2
	August	47.0	* 4.6	51.6	45.1	* 9.0
PERSONS	1996—					
	August	132.4	9.8	142.2	77.0	64.9
	1997—					
	June	109.4	9.4	118.8	71.6	7.9
	July	119.4	8.1	127.5	69.2	6.3
	August	112.6	9.7	122.3	69.4	7.9
AUSTRALIAN CAPITAL TERRITORY AND SOUTH EASTERN (SRs) (d)						
MALES	1996					
	August	123.1	9.9	133.0	42.6	7.4
	1997					
	June	138.3	12.0	150.2	46.1	8.0
	July	139.9	10.9	150.9	45.2	7.2
	August	138.0	12.3	150.4	46.4	8.2
FEMALES	1996—					
	August	108.9	9.8	118.7	76.7	8.3
	1997—					
	June	113.1	7.8	120.9	73.0	6.4
	July	113.8	8.4	122.2	70.6	6.9
	August	111.3	8.8	120.1	73.1	7.3
PERSONS	1996—					
	August	232.0	19.7	251.7	119.3	7.8
	1997					
	June	251.4	19.8	271.1	119.0	7.3
	July	253.8	19.3	273.1	115.8	7.1
	August	249.3	21.1	270.5	119.5	7.8

(a) While the Labour Force Survey is designed primarily to produce reliable estimates at the national and State/Territory level, it also delivers estimates for a number of regions within States. As with national and State estimates, regional labour force estimates are subject to sampling error. Since estimates for regions are components of corresponding estimates at the State level — and are thus based on a considerably smaller sample size — they are subject to higher relative standard error. Care should therefore be taken in interpretation of regional estimates, particularly month to month movements. Tables of standard errors are included in the Technical Note on pages 59–64 of this publication. (b) Previously Manly–Warringah (SR). (c) Excludes components of Far West (SD). These are published as part of Balance of NSW (MSR). (d) Estimates for the South Eastern (SR) are not published separately. Data for the South Eastern (SR) are included in ACT and South Eastern (SRs), and in Illawarra and South Eastern (SRs).

TABLE 20. LABOUR FORCE STATUS: ORIGINAL SERIES, ACT

Month	Employed		Unemployed			Labour force ('000)	Not in labour force ('000)	Civilian population aged 15 and over ('000)	Unemployment rate (per cent)	Participation rate (per cent)	
	Full-time workers ('000)	Part-time workers ('000)	Total ('000)	Looking for full-time work ('000)	Looking for part-time work ('000)						
MALES											
August--											
1993	70.0	10.7	80.7	5.6	1.2	6.8	87.5	22.0	109.6	7.8	79.9
1994	71.3	11.4	82.7	4.9	* 0.8	5.8	88.5	23.6	112.0	6.5	79.0
1995	72.5	12.7	85.2	6.3	1.3	7.7	92.9	20.2	113.1	8.3	82.1
1996--											
June	72.7	10.9	83.6	5.9	* 0.8	6.7	90.2	23.7	113.9	7.4	79.2
July	73.6	10.6	84.2	6.2	1.1	7.3	91.5	22.6	114.1	8.0	80.2
August	72.1	10.4	82.4	6.5	1.4	7.9	90.4	24.0	114.3	8.8	79.0
1997--											
May	73.2	11.7	84.9	3.9	1.9	5.8	90.8	24.6	115.3	6.4	78.7
June	72.0	12.4	84.4	5.2	1.9	7.0	91.4	23.9	115.3	7.7	79.3
July	73.8	12.0	85.8	5.0	1.0	6.0	91.8	23.6	115.4	6.5	79.5
August	73.1	11.6	84.7	5.4	1.9	7.3	91.9	23.5	115.4	7.9	79.7
MARRIED FEMALES											
August--											
1993	26.1	15.0	41.1	1.3	* 0.3	1.6	42.7	22.3	65.0	3.7	65.6
1994	27.1	16.2	43.2	* 0.8	* 0.8	1.6	44.8	20.5	65.3	3.6	68.7
1995	27.7	17.5	45.2	* 0.7	* 0.6	1.3	46.5	21.3	67.8	2.8	68.6
1996--											
June	26.3	18.3	44.6	* 0.8	1.0	1.8	46.3	21.0	67.4	3.8	68.8
July	25.9	17.8	43.7	1.2	* 0.7	2.0	45.7	20.7	66.4	4.3	68.9
August	25.6	16.9	42.5	1.4	* 0.6	2.0	44.5	21.3	65.8	4.4	67.6
1997--											
May	28.2	15.4	43.6	1.3	* 0.8	2.1	45.7	20.9	66.6	4.6	68.7
June	27.7	15.0	42.6	1.3	* 0.8	2.1	44.7	21.4	66.1	4.7	67.7
July	27.2	14.1	41.3	1.8	* 0.6	2.4	43.7	22.4	66.1	5.5	66.1
August	26.3	14.9	41.2	1.6	* 0.5	2.1	43.3	21.7	64.9	4.8	66.6
ALL FEMALES											
August--											
1993	43.7	26.7	70.4	3.1	1.3	4.4	74.8	40.0	114.8	5.9	65.2
1994	45.9	25.5	71.4	2.7	2.1	4.8	76.2	40.1	116.4	6.3	65.5
1995	43.5	29.6	73.2	2.5	1.9	4.4	77.6	40.0	117.6	5.7	66.0
1996--											
June	43.6	29.1	72.8	3.1	2.6	5.7	78.5	40.1	118.5	7.3	66.2
July	43.4	27.7	71.1	4.2	1.8	6.0	77.1	41.6	118.7	7.7	64.9
August	42.9	27.6	70.5	4.7	1.8	6.4	77.0	41.9	118.9	8.4	64.8
1997--											
May	46.8	28.3	75.1	3.5	2.3	5.8	80.9	38.5	119.4	7.2	67.8
June	47.4	26.5	73.9	3.2	2.1	5.3	79.2	40.2	119.4	6.7	66.3
July	47.0	26.1	73.1	3.1	2.0	5.2	78.2	41.2	119.4	6.6	65.5
August	45.2	26.4	71.6	3.9	2.2	6.2	77.7	41.6	119.4	7.9	65.1
PERSONS											
August--											
1993	113.7	37.4	151.1	8.8	2.5	11.3	162.3	62.0	224.4	6.9	72.3
1994	117.3	36.9	154.1	7.6	3.0	10.6	164.7	63.7	228.4	6.4	72.1
1995	116.1	42.3	158.4	8.9	3.3	12.1	170.5	60.2	230.7	7.1	73.9
1996--											
June	116.3	40.0	156.3	9.0	3.4	12.4	168.7	63.8	232.4	7.3	72.6
July	117.0	38.3	155.3	10.4	2.9	13.2	168.6	64.3	232.8	7.9	72.4
August	115.0	38.0	153.0	11.2	3.2	14.4	167.3	65.8	233.2	8.6	71.8
1997--											
May	120.0	40.0	160.0	7.5	4.2	11.7	171.7	63.1	234.7	6.8	73.1
June	119.4	38.9	158.3	8.3	4.0	12.3	170.7	64.1	234.8	7.2	72.7
July	120.8	38.0	158.9	8.1	3.0	11.1	170.0	64.8	234.8	6.6	72.4
August	118.2	38.0	156.2	9.3	4.1	13.4	169.7	65.1	234.8	7.9	72.3

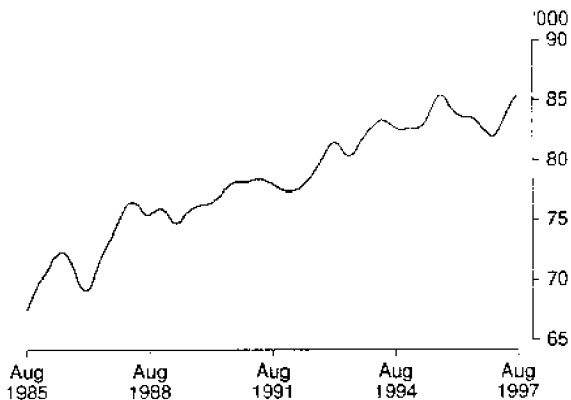
TABLE 21. LABOUR FORCE STATUS: TREND SERIES (a), ACT

Month	Employed (<i>'000</i>)	Unemployed (<i>'000</i>)	Labour force (<i>'000</i>)	Unemployment rate (per cent)	Participation rate (per cent)
MALES					
<i>August—</i>					
1993	80.7	6.8	87.5	7.8	79.9
1994	82.7	6.6	89.3	7.4	79.7
1995	85.0	7.2	92.3	7.8	81.6
<i>1996—</i>					
June	83.6	7.6	91.2	8.3	80.0
July	83.5	7.6	91.1	8.4	79.8
August	83.3	7.6	90.9	8.4	79.5
September	83.0	7.7	90.6	8.5	79.1
October	82.6	7.8	90.4	8.6	78.8
November	82.3	7.9	90.1	8.7	78.6
December	82.0	7.9	89.9	8.8	78.3
<i>1997—</i>					
January	82.0	7.8	89.8	8.7	78.1
February	82.3	7.6	89.9	8.5	78.1
March	82.8	7.3	90.1	8.1	78.2
April	83.5	7.0	90.5	7.8	78.5
May	84.1	6.8	90.9	7.5	78.8
June	84.6	6.8	91.4	7.4	79.2
July	85.0	6.8	91.8	7.4	79.6
August	85.4	6.9	92.2	7.4	79.9
FEMALES					
<i>August—</i>					
1993	70.3	5.5	75.9	7.3	66.1
1994	71.4	5.3	76.8	6.9	66.0
1995	73.7	4.6	78.3	5.9	66.6
<i>1996—</i>					
June	71.9	6.6	78.5	8.5	66.2
July	71.6	6.7	78.3	8.6	66.0
August	71.1	6.7	77.8	8.7	65.5
September	70.5	6.7	77.2	8.7	64.9
October	70.0	6.6	76.6	8.6	64.3
November	70.0	6.3	76.3	8.3	64.0
December	70.5	5.8	76.4	7.7	64.0
<i>1997—</i>					
January	71.6	5.4	77.0	7.0	64.5
February	72.9	5.0	77.9	6.5	65.3
March	74.0	5.0	78.9	6.3	66.1
April	74.5	5.1	79.7	6.4	66.7
May	74.5	5.5	79.9	6.8	66.9
June	74.1	5.8	79.9	7.3	66.9
July	73.6	6.1	79.7	7.7	66.8
August	73.0	6.4	79.4	8.1	66.5
PERSONS					
<i>August—</i>					
1993	151.0	12.4	163.4	7.6	72.8
1994	154.1	11.9	166.0	7.2	72.7
1995	158.7	11.9	170.6	7.0	74.0
<i>1996—</i>					
June	155.5	14.2	169.7	8.4	73.0
July	155.1	14.3	169.4	8.5	72.8
August	154.3	14.4	168.7	8.5	72.4
September	153.4	14.4	167.9	8.6	71.9
October	152.6	14.4	167.0	8.6	71.4
November	152.2	14.2	166.4	8.5	71.1
December	152.6	13.7	166.3	8.3	71.0
<i>1997—</i>					
January	153.6	13.2	166.8	7.9	71.2
February	155.2	12.7	167.8	7.5	71.6
March	156.8	12.3	169.1	7.3	72.0
April	158.0	12.1	170.1	7.1	72.5
May	158.6	12.3	170.9	7.2	72.8
June	158.7	12.6	171.3	7.3	73.0
July	158.6	12.9	171.5	7.5	73.1
August	158.3	13.3	171.6	7.7	73.1

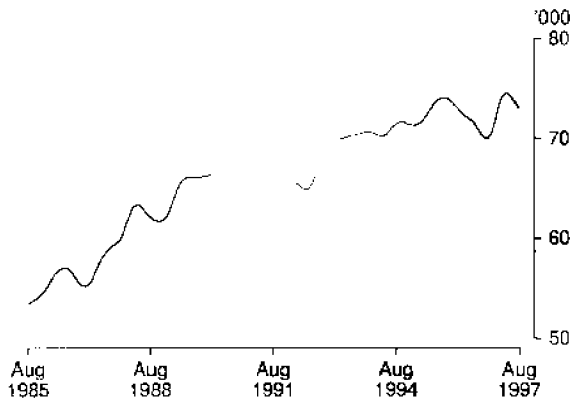
(a) See Explanatory Notes 29 and 30.

TREND SERIES, ACT (a)

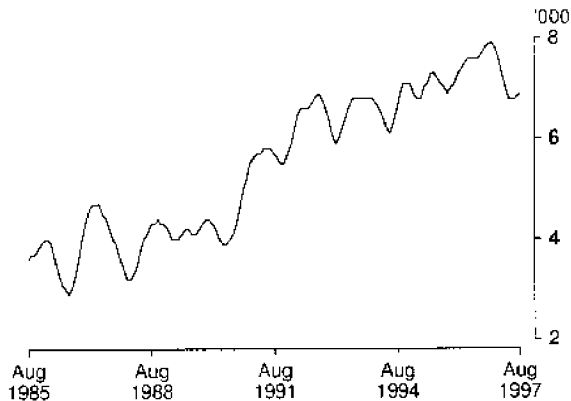
EMPLOYED MALES



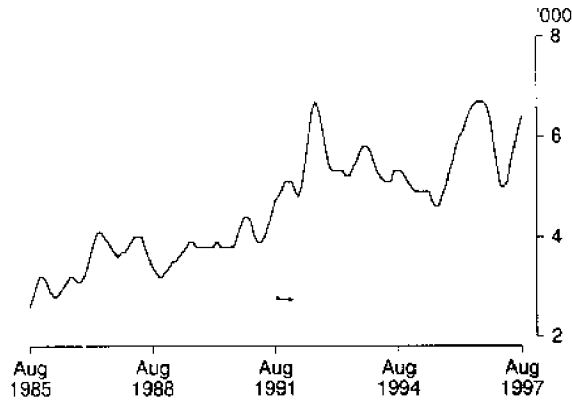
EMPLOYED FEMALES



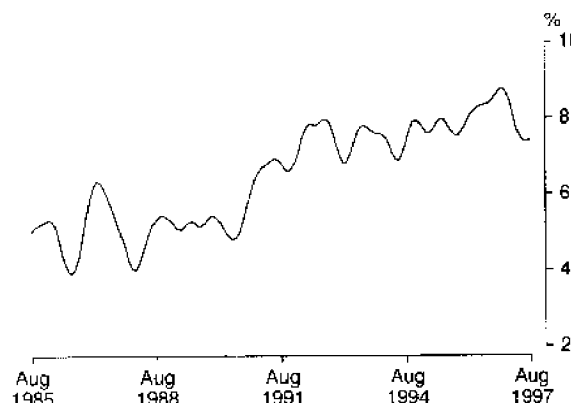
UNEMPLOYED MALES



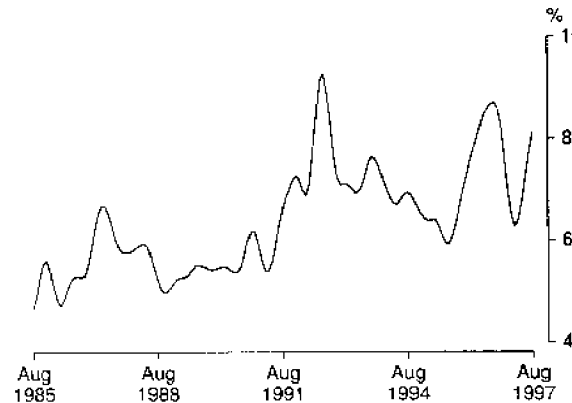
UNEMPLOYED FEMALES



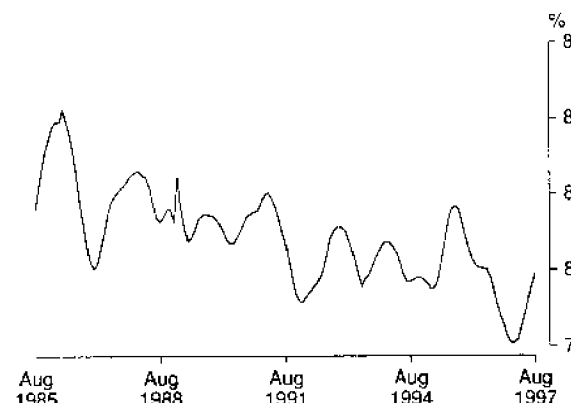
MALE UNEMPLOYMENT RATE



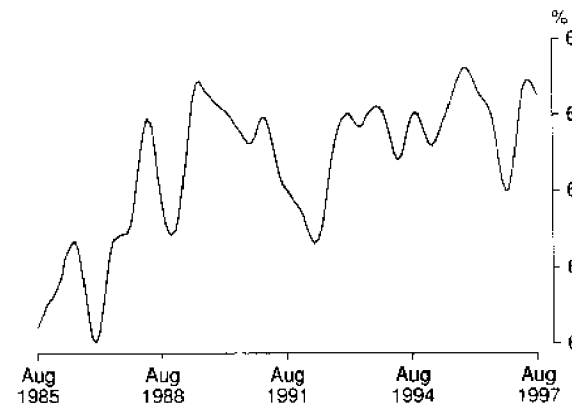
FEMALE UNEMPLOYMENT RATE



MALE PARTICIPATION RATE



FEMALE PARTICIPATION RATE



(a) Comparisons between these graphs should not be made, as their vertical axes are not similarly scaled.

TABLE 22. LABOUR FORCE STATUS: AGE, ACT, AUGUST 1997

	Persons						Total
	Females			Age group (years)			
	Males	Married	Total	15-19	20-24	25 and over	
	'000 —						
<i>Employed</i>	84.7	41.2	71.6	10.0	20.3	125.9	156.2
Full-time workers	73.1	26.3	45.2	1.7	14.3	102.2	118.2
Part-time workers	11.6	14.9	26.4	8.2	6.0	23.8	38.0
<i>Unemployed</i>	7.3	2.1	6.2	3.6	3.5	6.3	13.4
Looking for full-time work	5.4	1.6	3.9	1.3	2.6	5.5	9.3
Looking for part-time work	1.9	* 0.5	2.2	2.3	* 0.9	* 0.9	4.1
<i>Labour force</i>	91.9	43.3	77.7	13.6	23.8	132.3	169.7
Not in labour force	23.5	21.7	41.6	8.6	4.6	51.9	65.1
Aged 15-19 attending school	4.1	* 0.0	3.3	7.5	7.5
<i>Civilian population</i>	115.4	64.9	119.4	22.2	38.4	184.2	234.8
	— per cent —						
Unemployment rate	7.9	4.8	7.9	26.7	14.6	4.8	7.9
Looking for full-time work	6.9	5.9	8.0	43.0	15.2	5.1	7.3
Participation rate	79.7	66.6	65.1	61.3	83.7	71.8	72.3
Employment/population ratio	73.4	63.4	60.0	44.9	71.5	68.4	66.5
	— number —						
Average weekly hours worked by employed persons	38.9	29.5	29.4	14.3	32.5	36.5	34.6
Average duration of unemployment (weeks)	52.7	31.0	34.3	22.0	26.9	66.6	44.3

TABLE 23. NON-INSTITUTIONALISED PERSONS(a): LABOUR FORCE STATUS, BIRTHPLACE AND YEAR OF ARRIVAL, ACT, AUGUST 1997 ('000)

	Employed	Unemployed	Not in labour force	Labour force	Civilian population aged 15 and over
<i>Born in Australia</i>	118.1	10.0	39.5	128.1	167.6
<i>Born outside Australia</i>	38.2	3.4	22.7	41.6	64.3
Arrived before 1966	10.2	* 0.5	9.2	10.8	20.0
Arrived 1966-1970	5.4	* 0.2	2.5	5.7	8.2
Arrived 1971-1975	5.6	* 0.3	2.4	5.9	8.3
Arrived 1976-1980	4.1	* 0.2	1.4	4.3	5.7
Arrived 1981-1985	4.4	* 0.6	2.2	5.0	7.1
Arrived 1986-1990	4.8	* 0.6	1.3	5.4	6.7
Arrived 1991-1995	2.7	* 0.7	2.3	3.4	5.7
Arrived 1991 to survey date	3.6	1.0	3.8	4.6	8.4
<i>Main English speaking countries</i>	15.3	1.1	7.6	16.4	24.0
Arrived before 1966	4.3	* 0.1	3.4	4.3	7.8
Arrived 1966-1970	2.7	* 0.2	* 0.9	2.9	3.9
Arrived 1971-1975	2.9	* 0.3	1.1	3.2	4.3
Arrived 1976-1980	1.4	* 0.0	* 0.6	1.4	2.0
Arrived 1981-1985	1.7	* 0.1	1.0	1.9	2.9
Arrived 1986-1990	1.1	* 0.2	* 0.4	1.3	1.7
Arrived 1991-1995	* 0.8	* 0.1	* 0.2	* 0.9	1.0
Arrived 1991 to survey date	1.1	* 0.2	* 0.2	1.3	1.6
<i>Other than Main English speaking countries</i>	22.9	2.3	15.1	25.2	40.4
Arrived before 1966	6.0	* 0.5	5.8	6.4	12.2
Arrived 1966-1970	2.7	* 0.1	1.6	2.8	4.3
Arrived 1971-1975	2.7	* 0.0	1.3	2.7	4.0
Arrived 1976-1980	2.8	* 0.2	* 0.8	2.9	3.8
Arrived 1981-1985	2.6	* 0.4	1.2	3.1	4.2
Arrived 1986-1990	3.6	* 0.4	* 0.9	4.0	5.0
Arrived 1991-1995	2.0	* 0.6	2.1	2.6	4.7
Arrived 1991 to survey date	2.5	* 0.8	3.5	3.3	6.8
Total	156.2	13.4	62.3	169.7	231.9

(a) Excludes boarding school pupils.

TABLE 24. EMPLOYED PERSONS: INDUSTRY, ACT
(*000)

Industry division	Average for year ending					
	August 1996			August 1997		
	Males	Females	Persons	Males	Females	Persons
Industry—						
Agriculture, forestry and fishing	* 0.4	* 0.2	* 0.6	* 0.4	* 0.1	* 0.5
Mining	* 0.0	* 0.0	* 0.0	* 0.1	* 0.1	* 0.2
Manufacturing	3.4	1.8	5.2	3.5	1.6	5.1
Electricity, gas and water supply	* 0.6	* 0.1	* 0.7	* 0.4	* 0.2	* 0.6
Construction	7.8	* 1.2	9.0	9.7	* 1.2	10.9
Wholesale trade	3.6	1.4	5.0	3.0	* 1.0	4.0
Retail trade	10.3	10.4	20.7	9.6	10.6	20.1
Accommodation, cafes and restaurants	4.4	4.0	8.4	4.0	3.5	7.5
Transport and storage	3.8	* 1.1	4.9	3.2	* 1.0	4.2
Communication services	1.6	* 1.1	2.7	* 1.2	* 0.8	2.0
Finance and insurance	1.6	2.2	3.8	* 1.2	1.7	2.9
Property and business services	11.4	7.6	19.0	11.6	8.0	19.6
Government administration and defence	21.2	18.1	39.4	21.7	18.6	40.3
Education	5.1	8.9	13.9	5.0	8.2	13.2
Health and community services	2.5	9.3	11.8	2.7	9.7	12.4
Cultural and recreational services	3.0	1.8	4.7	2.4	3.1	5.5
Personal and other services	3.1	3.4	6.5	3.7	3.0	6.8
Total employed	83.6	72.6	156.3	83.5	72.3	155.8

TABLE 25. EMPLOYED PERSONS: OCCUPATION (a), ACT, AVERAGE FOR YEAR ENDING AUGUST 1997
(*000)

Major occupation group	Males	Females	Persons
Occupation—			
Managers and administrators	11.0	4.8	15.8
Professionals	20.2	17.3	37.6
Associate professionals	11.9	7.8	19.7
Tradespersons and related workers	13.6	1.7	15.4
Advanced clerical and service workers	* 0.7	5.4	6.1
Intermediate clerical, sales and service workers	9.0	20.8	29.8
Intermediate production and transport workers	5.5	* 0.7	6.2
Elementary clerical, sales and service workers	6.5	11.2	17.7
Labourers and related workers	5.1	2.5	7.6
Total employed	83.5	72.3	155.8

(a) Occupation data are now classified according to the Second Edition of the Australian Standard Classification of Occupations (ASCO). See the Explanatory Notes for more details.

AVERAGE EMPLOYMENT BY INDUSTRY DIVISION, ACT, YEAR ENDING AUGUST

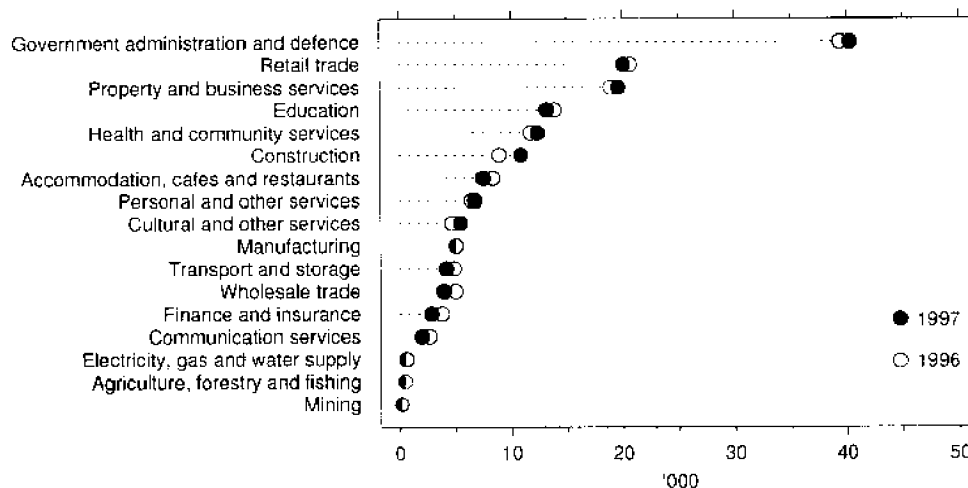
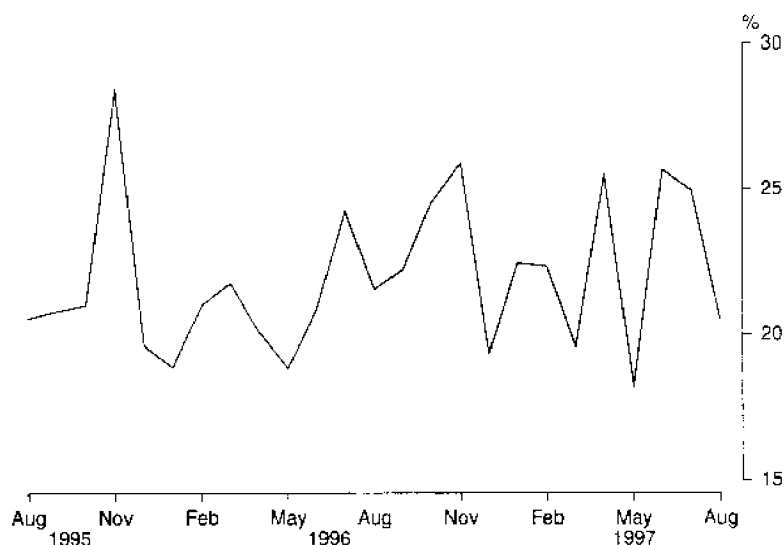


TABLE 26. LONG-TERM UNEMPLOYMENT, ACT

Month	Long-term unemployment									Long-term unemployment as a proportion of total unemployment		
	52 weeks and under 104			104 weeks and over			Total			Males (per cent)	Females (per cent)	Persons (per cent)
	Males ('000)	Females ('000)	Persons ('000)	Males ('000)	Females ('000)	Persons ('000)	Males ('000)	Females ('000)	Persons ('000)			
1996—												
June	* 1.2	* 0.5	* 1.7	* 0.6	* 0.2	* 0.9	1.8	* 0.8	2.6	27.2	13.5	20.9
July	* 1.2	* 0.7	* 1.9	* 0.7	* 0.6	1.3	1.9	1.3	3.2	25.8	22.3	24.2
August	* 0.9	* 0.6	* 1.6	* 0.9	* 0.6	1.5	1.9	1.2	3.1	23.6	19.0	21.6
September	* 0.9	* 0.4	* 1.3	* 0.9	* 0.8	1.7	1.7	1.2	2.9	25.1	19.1	22.2
October	* 1.2	* 0.4	* 1.6	* 0.9	* 0.6	1.5	2.1	1.0	3.2	29.0	18.6	24.6
November	* 1.1	* 0.9	* 1.9	* 0.7	* 0.7	1.4	1.7	1.6	3.3	27.7	24.2	25.9
December	* 0.9	* 0.5	* 1.4	* 0.9	* 0.4	1.3	1.8	* 0.9	2.7	21.6	16.0	19.4
1997—												
January	* 1.4	* 1.0	* 2.4	* 0.6	* 0.4	1.0	2.0	1.4	3.4	22.5	22.3	22.5
February	* 1.4	* 0.7	* 2.1	* 0.9	* 0.4	1.3	2.3	1.2	3.4	26.0	17.5	22.4
March	* 1.3	* 0.3	* 1.5	* 0.8	* 0.2	1.0	2.1	* 0.4	2.5	24.9	9.5	19.6
April	* 1.2	* 0.5	* 1.7	* 0.6	* 0.6	1.3	1.9	1.2	3.0	27.8	22.5	25.5
May	* 0.9	* 0.4	* 1.3	* 0.7	* 0.2	* 0.9	1.6	* 0.6	2.1	26.8	9.7	18.2
June	* 0.8	* 1.0	* 1.8	1.0	* 0.3	1.3	1.8	1.3	3.2	26.3	24.9	25.7
July	* 0.8	* 0.6	* 1.4	* 0.8	* 0.6	1.4	1.6	1.2	2.8	26.5	23.1	25.0
August	* 0.5	* 0.9	* 1.4	1.1	* 0.2	1.3	1.6	1.2	2.8	21.5	19.3	20.5

LONG-TERM UNEMPLOYED AS A PROPORTION OF TOTAL UNEMPLOYED, ACT



EXPLANATORY NOTES

INTRODUCTION

1 This publication contains estimates of the labour force derived from the Labour Force Survey (LFS) component of the monthly population survey, which is conducted on a sample basis throughout Australia.

THE POPULATION SURVEY

2 This survey consists of the LFS and, in most months, one or more supplementary topics. The survey is based on a multi-stage area sample of private dwellings (houses, flats, etc.) and non-private dwellings (hotels, motels, etc.) and covers slightly less than 0.5% of the population of NSW. The information is obtained from the occupants of selected dwellings by specially trained interviewers. The interviews are generally conducted during the two weeks beginning on the Monday between the 6th and 12th of each month. The information obtained relates to the week before the interview (i.e. the reference week).

3 The ABS has introduced the use of telephone interviewing into the LFS. Households selected for the LFS are interviewed each month for eight months, with one-eighth of the sample being replaced each month. The first interview is conducted face-to-face with subsequent interviews conducted by telephone (if acceptable to the respondent). Telephone interviewing was phased in for each new sample group from August 1996 to February 1997.

SCOPE

4 The LFS includes all persons aged 15 years and over, except:

- members of the permanent defence forces;
- certain diplomatic personnel of overseas governments, customarily excluded from census and estimated populations;
- overseas residents in Australia; and
- members of non-Australian defence forces (and their dependants) stationed in Australia.

SURVEY SAMPLE REDESIGN

5 Following each Population Census, the ABS re-designs and re-selects the LFS to take into account the new information which is obtained from the Census. The sample used in the LFS was re-designed and re-selected using information collected in the 1991 Census. The new sample was phased in over the period September to December 1992.

6 For the most part, one-quarter of the new sample was introduced each month so that, by December 1992, the entire new sample was in place.

POTENTIAL EFFECTS ON LABOUR FORCE SURVEY ESTIMATES

7 Implications for estimates produced from the LFS due to sample redesign and its implementation are as follows.

- The sampling error overall increased initially by about 7% over the previous level but has gradually declined during the life of the new sample. For State estimates, the initial increase was about 8%, while for the Territories, there was a decrease of 19%. There were also higher standard errors for movements produced over the period September 1992 to December 1992 compared with those for the corresponding series produced prior to this period and from January 1993 onwards. Overall, these were estimated to be up to 20% higher than the normal standard errors on monthly movements.

EXPLANATORY NOTES *continued*

.....

- Analysis has shown that the unemployment rate is marginally higher (less than 0.5 percentage points on average) for those persons in the sample for the first time. Normally, this will not affect the overall estimates of month-to-month movements because the number of persons in the sample does not change significantly. However, during the transition period, there were twice as many people as usual in the sample for the first time. This may have caused a small upward movement (of less than 0.1 percentage points on average) in the unemployment rate from August 1992 to September 1992 and a compensating decrease from December 1992 to January 1993.

8 For further information, see *Information Paper: Labour Force Survey Sample Design* (Cat. no. 6269.0).

DEFINITIONS

9 The labour force category to which a person is assigned depends on the actual activity undertaken during the reference week (i.e. whether working, looking for work, etc.). The following definitions, which conform closely to the international standard definitions specified by the International Labour Office (ILO), relate only to those persons within the scope of the survey.

10 *Employed persons* comprise all civilians aged 15 years and over who, during the reference week:

- worked for one hour or more for pay, profit, commission or payment in kind (including employees, employers and self-employed persons) in a job or business, or on a farm; or
- worked for one hour or more without pay in a family business or on a farm (i.e. unpaid family helpers); or
- were employees who had a job but were not at work and were: on paid leave; on leave without pay for less than four weeks up to the end of the reference week; stood down without pay because of bad weather or plant breakdown at their place of employment for less than four weeks up to the end of the reference week; on strike or locked out; on workers' compensation and expected to be returning to their job; or receiving wages or salary while undertaking full-time study; or
- were employers, self-employed persons or unpaid family helpers who had a job, business or farm, but were not at work.

11 Prior to April 1986, unpaid family helpers who worked for 1-14 hours were excluded from the category of employed persons.

12 Employed persons can be classified into:

- *full-time workers* (i.e. those who usually worked 35 hours or more a week (in all jobs) and others who, although usually part-time workers, worked 35 hours or more during the reference week); and
- *part-time workers* (i.e. those who usually worked less than 35 hours a week and who did so during the reference week).

EXPLANATORY NOTES *continued*

.....

13 *Unemployed persons* are all those aged 15 years and over who were not employed during the reference week, and:

- had actively looked for full-time or part-time work at any time in the four weeks up to the end of the reference week, and:
 - were available for work in the reference week, or would have been available except for temporary illness (i.e. lasting for less than four weeks to the end of the reference week); or
 - were waiting to start a new job within four weeks from the end of the reference week and would have started in the reference week if the job had been available then; or
- were waiting to be called back to a full-time or part-time job from which they had been stood down without pay for less than four weeks up to the end of the reference week (including the whole of the reference week) for reasons other than bad weather or plant breakdown.

14 *Actively looking for work* includes writing, telephoning or applying in person to an employer for work; answering a newspaper advertisement for a job; checking factory or Commonwealth Employment Service notice-boards; being registered with the Commonwealth Employment Service; checking or registering with any other employment agency; advertising or tendering for work; and contacting friends or relatives.

15 *The unemployment rate* for any group is the number unemployed expressed as a percentage of the labour force (i.e. employed plus unemployed) in the same group.

16 The *labour force* comprises all persons who, during the reference week, were employed or unemployed as defined above.

17 *Long-term unemployed* comprises persons unemployed for a period of 52 weeks or more.

18 *Persons not in the labour force* are those who, during the reference week, were not in the categories *employed* or *unemployed* as defined above.

19 *The labour force participation rate* for any group is the labour force expressed as a percentage of the civilian population aged 15 years and over in the same group.

20 *Duration of unemployment* is the period from the time the person began looking for work or was stood down to the end of the reference week.

21 *Unemployed persons classified by industry and occupation.* Unemployed persons who had worked full-time for two weeks or more in the last two years are classified according to the industry and occupation of their most recent full-time job.

22 *Industry classification.* From August 1994, LFS industry data have been classified according to the *Australian and New Zealand Standard Industrial Classification (ANZSIC), 1993* (Cat. no. 1292.0). For further information about the application of ANZSIC to LFS data, see *Information Paper Labour Force Survey: Introduction of ANZSIC for industry data* (Cat. no. 6259.0).

23 *Occupation classification.* From August 1996, occupation data are classified according to the *Australian Standard Classification of Occupations (ASCO), Second Edition*. This replaces the First Edition which was introduced into the survey in August 1986. A detailed description of the new classification appears in *ASCO — Australian Standard Classification of Occupations, Information Paper* (Cat. no. 1221.0).

EXPLANATORY NOTES *continued*

.....

24 *Marital status.* In the LFS, persons are classified as married or not married. Persons are classified as married if they are reported as being married (including de facto) and their spouse was a usual resident of the household at the time of the survey.

25 *Persons attending school or a tertiary educational institution.* Persons attending school comprise those aged 15–19 years who, during the reference week, were enrolled full-time at secondary or high schools (including boarding school pupils). Persons attending a tertiary educational institution comprise those aged 15–24 years who were enrolled full-time at universities, colleges of advanced education, technical colleges, colleges of technical and further education, and theological colleges.

26 *Employment/population ratio.* For any group, the number of employed persons expressed as a percentage of the civilian population aged 15 years and over in the same group.

STATISTICAL AREAS

27 The regional structure for NSW used in tables 16–19 is based on the Statistical Region structure of the Australian Standard Geographical Classification (ASGC). For further information concerning statistical areas, please refer to pages 53–58 and the publications *Regional Statistics, New South Wales* (Cat. no. 1304.1) and *Australian Standard Geographical Classification* (Cat. no. 1216.0).

28 Data for the combined Statistical Regions of South Eastern (NSW) and the Australian Capital Territory appeared, for the first time, in the February 1997 issue.

SEASONAL ADJUSTMENT AND TREND ESTIMATION

29 Seasonal adjustment is a means of removing the estimated effects of normal seasonal variation from the series so that the effects of other influences on the series can be more clearly recognised. Seasonal adjustment does not aim to remove the irregular or non-seasonal influences which may be present in any particular month. This means that month-to-month movements of the seasonally adjusted estimates may not be reliable indicators of trend behaviour. For example, irregular factors unrelated to the trend account for more than half the seasonally adjusted movement with the following frequency:

- employment: 5 in 10 monthly movements;
- unemployment: 7 in 10 monthly movements; and
- participation rate: 9 in 10 monthly movements

30 Smoothing seasonally adjusted series produces a measure of the underlying trend by reducing the impact of the irregular component of the series. The trend estimates are derived by applying a 13-term Henderson-weighted moving average to the respective seasonally adjusted series. While this smoothing technique enables estimates to be produced which include the latest month, it does result in revisions to the most recent months as additional observations become available.

31 Seasonally adjusted series for NSW appear in this publication in table 2. Trend estimates for NSW and ACT appear in tables 2 and 21 respectively. Seasonally adjusted data is not available for ACT.

RELIABILITY OF THE ESTIMATES

32 Estimates in this publication are subject to sampling and non-sampling errors. The Technical note on pages 59–61 of this publication gives information on these sources of error.

EXPLANATORY NOTES *continued*

RELATED PUBLICATIONS

33 Users may also wish to refer to the following related publications which are available from the ABS Bookshop:

- *Australian Capital Territory at a Glance*, Cat. no. 1314.8, issued annually.
- *Australian Capital Territory Business Indicators*, Cat. no. 1303.8, issued monthly.
- *Australian Capital Territory Statistical Summary*, Cat. no. 1307.8, issued annually.
- *A Guide to Labour Statistics*, Cat. no. 6102.0.
- *A Guide to Smoothing Time Series — Estimates of 'Trend'*, Cat. no. 1316.0.
- *Information Paper: ASCO — Australian Standard Classifications of Occupations*, Cat. no. 1221.0.
- *Information Paper: Labour Force Survey: Introduction of ANZSIC for Industry Data*, Cat. no. 6259.0.
- *Information Paper: Labour Force Survey — Sample Design*, Cat. no. 6269.0.
- *Labour Statistics, Australia*, Cat. no. 6101.0, issued annually.
- *Labour Force, Australia, Preliminary*, Cat. no. 6202.0, issued monthly.
- *Labour Force, Australia*, Cat. no. 6203.0, issued monthly.
- *Regional Statistics, New South Wales*, Cat. no. 1304.1, issued annually.
- *Technical Paper: The Labour Force, Australia: Preliminary Data on Floppy Disk — Technical Details*, Cat. no. 6271.0.
- *Time Series Decomposition — An Overview*, Cat. no. 1317.0.

ADDITIONAL DATA

34 In addition to the LFS, the ABS publishes a wide range of supplementary labour market information. For details see page 52 of this publication.

35 The ABS can also make available information which is not published. This information may be made available in one or more of the following forms: microfiche, photocopy, data tape, floppy disk, computer printout, clerically-extracted tabulation. In general, a charge is made for providing unpublished information.

ROUNDING

36 Figures have been rounded and discrepancies may occur between sums of the component items and the totals shown.

SYMBOLS AND OTHER USAGES

A	Area
C	City
MSR	Major Statistical Region
n.e.c.	Not elsewhere classified
SD	Statistical Division
SR	Statistical Region
SRS	Statistical Region Sector
*	Subject to sampling variability too high for most practical purposes. See the Technical note on Data Reliability.
—	Nil or rounded to zero (including null cells)

APPENDIX SUPPLEMENTARY TOPICS

Although emphasis in the population survey is placed on the regular collection of data on demographic and labour force characteristics, supplementary and special surveys of particular aspects of the labour force are carried out from time to time.

It was ABS practice to release statistics from supplementary and special surveys in *Labour Force, Australia* (Cat. no. 6203.0). This practice ceased with the release of the February 1996 issue of *Labour Force, Australia*. For future releases of supplementary labour data, separate publications containing summary results and key findings will be produced.

Equivalent tables at the State level are available on microfiche. In addition, other unpublished data can be provided to meet special requirements.

CATALOGUE/ PRODUCT NO.	TITLE OF PUBLICATION/STANDARD DATA SERVICE	PRICE(a) \$
6206.0	Labour Force Experience, Australia, February 1997	18.50
6209.0	Labour Mobility, Australia, February 1996	16.00
6216.0.40.001*	Multiple Jobholding, Australia, August 1994	17.50
6220.0	Persons not in the Labour Force, Australia, September 1996	16.00
6222.0	Job Search Experience of Unemployed Persons, Australia, July 1996	15.50
6224.0	Labour Force Status and Other Characteristics of Families, Australia, June 1997	19.00
6227.0	Transition from Education to Work, Australia, May 1996	16.00
6238.0.40.001*	Retirement and Retirement Intentions, Australia, November 1994	17.50
6243.0	Career Paths of Persons with Trade Qualifications, Australia, 1993	18.00
6245.0	Successful and Unsuccessful Job Search Experience, Australia, July 1996	15.50
6250.0	Labour Force Status and Other Characteristics of Migrants, Australia, November 1996	15.50
6254.0	Career Experience, Australia, November 1996	16.00
6264.0.40.001*	Persons who had re-entered the Labour Force, Australia, July 1995	25.00
6265.0	Underemployed Workers, Australia, September 1996	15.50
6267.0.40.001*	Persons who have left the Labour Force, Australia, September 1994	17.50
6272.0	Participation in Education, Australia, September 1996	16.50
6275.0	Persons Employed at Home, Australia, September 1995	14.50
6278.0	Training and Education Experience, Australia, 1993	30.00
6286.0	Australians' Employment and Unemployment Patterns, Jobseekers, 1995	19.00
6289.0	Australians' Employment and Unemployment Patterns, First Results, 1994-1996	13.50
6310.0.40.001*	Weekly Earnings of Employees (Distribution), Australia, August 1995	25.00
6319.0	Superannuation, Australia, November 1995	16.50
6325.0	Trade Union Members, Australia, August 1996	15.50
6334.0.40.001*	Employment Benefits, Australia, August 1994	17.50
6342.0.40.001*	Working Arrangements, Australia, August 1995	25.00

(a) Prices quoted are subject to revision.

* Standard data service

APPENDIX REGIONS OF NSW AND ACT

<i>Major Statistical Region</i>	<i>Statistical Region/ Statistical Region Sector</i>	<i>Statistical Local Area</i>
SYDNEY		
	Inner Sydney and Inner Western Sydney (SRs)	Ashfield (A) Botany (A) Burwood (A) Concord (A) Drummoyne (A) Leichhardt (A) Marrickville (A) South Sydney (C) Strathfield (A) Sydney (C) — Inner Sydney (C) — Remainder
	Inner Sydney (SR)	Botany (A) Leichhardt (A) Marrickville (A) South Sydney (C) Sydney (C) — Inner Sydney (C) — Remainder
	Eastern Suburbs (SR)	Randwick (C) Waverley (A) Woollahra (A)
	St George—Sutherland (SR)	Hurstville (C) Kogarah (A) Rockdale (A) Sutherland Shire (A)
	Canterbury—Bankstown (SR)	Bankstown (C) Canterbury (A)
	Fairfield—Liverpool and Outer South Western Sydney (SRs)	Camden (A) Campbelltown (C) Fairfield (C) Liverpool (C) Wollondilly (A)
	Fairfield—Liverpool (SR)	Fairfield (C) Liverpool (C)
	Central Western Sydney (SR)	Auburn (A) Holroyd (C) Parramatta (C)
	Outer Western Sydney (SR)	Blue Mountains (C) Hawkesbury (C) Penrith (C)

APPENDIX REGIONS OF NSW AND ACT *continued*

<i>Major Statistical Region</i>	<i>Statistical Region/ Statistical Region Sector</i>	<i>Statistical Local Area</i>
SYDNEY <i>continued</i>	Blacktown–Baulkham Hills (SR)	Baulkham Hills (A) Blacktown (C)
	Lower Northern Sydney (SR)	Hunter's Hill (A) Lane Cove (A) Mosman (A) North Sydney (A) Ryde (C) Willoughby (C)
	Hornsby–Ku-ring-gai (SR)	Hornsby (A) Ku-ring-gai (A)
	Northern Beaches (SR)	Manly (A) Pittwater (A) Warringah (A)
	Gosford–Wyong (SR)	Gosford (C) Wyong (A)
BALANCE OF NSW (b)	Hunter (SR)	Cessnock (C) Dungog (A) Gloucester (A) Great Lakes (A) Lake Macquarie (C) Maitland (C) Merriwa (A) Murrurundi (A) Muswellbrook (A) Newcastle (C) — Inner Newcastle (C) — Remainder Port Stephens (A) Scone (A) Singleton (A)
	Newcastle (SRS)	Cessnock (C) Lake Macquarie (C) Maitland (C) Newcastle (C) — Inner Newcastle (C) — Remainder Port Stephens (A)

APPENDIX REGIONS OF NSW AND ACT *continued*

<i>Major Statistical Region</i>	<i>Statistical Region/ Statistical Region Sector</i>	<i>Statistical Local Area</i>
BALANCE OF NSW <i>continued</i>		
	Illawarra and South Eastern (SRs)	Bega Valley (A) Bombala (A) Boorowa (A) Cooma-Monaro (A) Crookwell (A) Eurobodalla (A) Goulburn (C) Gunning (A) Harden (A) Kiama (A) Mulwaree (A) Queanbeyan (C) Shellharbour (A) Shoalhaven (C) Snowy River (A) Tallaganda (A) Wingecarribee (A) Wollongong (C) Yarrowlumla (A) Yass (A) Young (A)
	Illawarra (SR)	Kiama (A) Shellharbour (A) Shoalhaven (C) Wingecarribee (A) Wollongong (C)
	Wollongong (SRS)	Kiama (A) Shellharbour (A) Wollongong (C)
	Richmond-Tweed and Mid-North Coast (SRs)	Ballina (A) Bellingen (A) Byron (A) Casino (A) Coffs Harbour (C) Copmanhurst (A) Grafton (C) Greater Taree (C) Hastings (A) Kempsey (A) Kyogle (A) Lismore (C) Lord Howe Island Macleay (A) Nambucca (A) Nymboida (A) Richmond River (A) Tweed (A) — Part A Tweed (A) — Part B Ulmarra (A)

APPENDIX REGIONS OF NSW AND ACT *continued*

<i>Major Statistical Region</i>	<i>Statistical Region/ Statistical Region Sector</i>	<i>Statistical Local Area</i>
BALANCE OF NSW <i>continued</i>	Northern, Far West–North Western and Central West (SRs)	Armidale (C) Barraba (A) Bathurst (C) Bingara (A) Bland (A) Blayney (A) — Part A Blayney (A) — Part B Bogan (A) Bourke (A) Brewarrina (A) Cabonne (A) — Part A Cabonne (A) — Part B Cabonne (A) — Part C Cobar (A) Coolah (A) Coonabarabran (A) Coonamble (A) Cowra (A) Dubbo (C) Dumaresq (A) Evans (A) — Part A Evans (A) — Part B Forbes (A) Gilgandra (A) Glen Innes (A) Greater Lithgow (C) Gunnedah (A) Guyra (A) Inverell (A) — Part A Inverell (A) — Part B Lachlan (A) Manilla (A) Moree Plains (A) Mudgee (A) Narrabri (A) Narromine (A) Nundle (A) Oberon (A) Orange (C) Parkes (A) Parry (A) Quirindi (A) Rylstone (A) Severn (A) Tamworth (C) Tenterfield (A) Uralla (A) Walcha (A) Walgett (A) Warren (A) Weddin (A) Wellington (A) Yallaroi (A)

APPENDIX REGIONS OF NSW AND ACT *continued*

Major Statistical Region Statistical Region/
Statistical Region Sector Statistical Local Area

BALANCE OF NSW *continued*

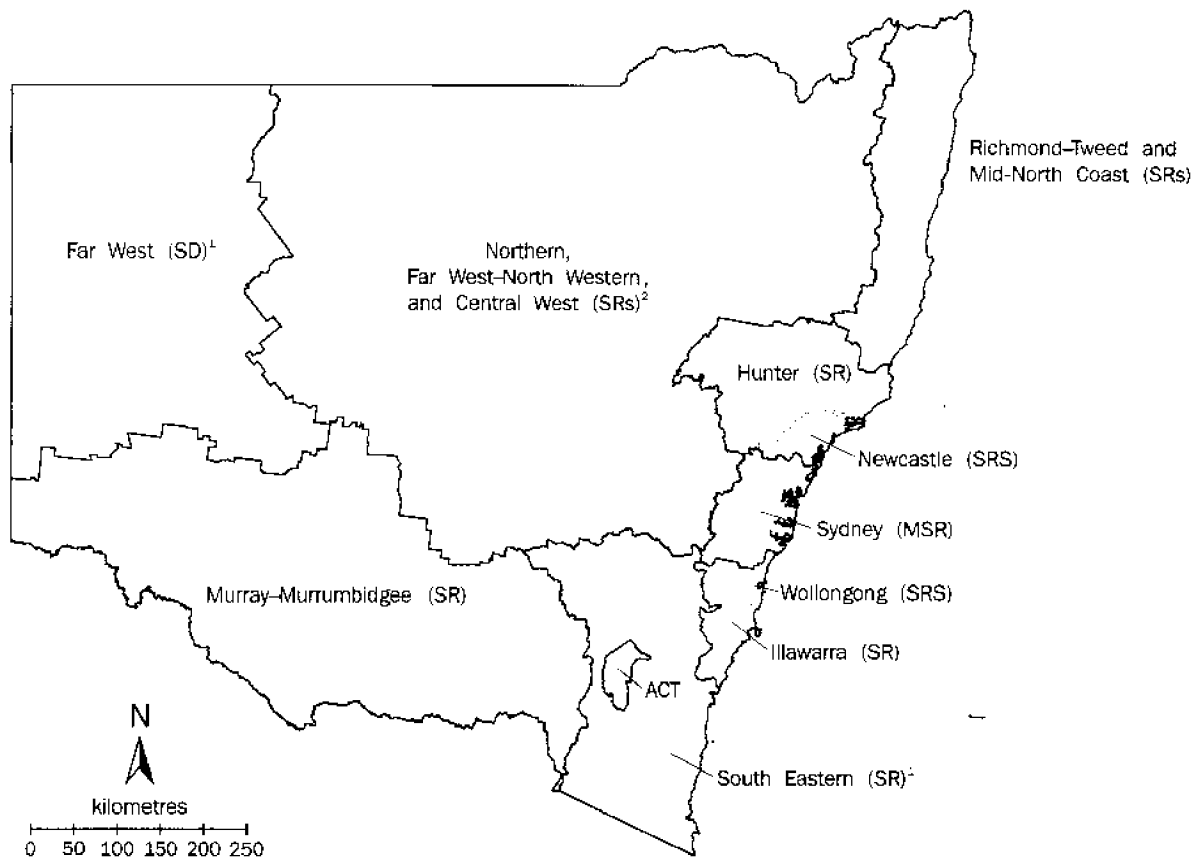
Murray–Murrumbidgee (SR)	Albury (C) Balranald (A) Berrigan (A) Carrathool (A) Conargo (A) Coolamon (A) Cootamundra (A) Corowa (A) Culcairn (A) Deniliquin (A) Griffith (C) Gundagai (A) Hay (A) Holbrook (A) Hume (A) Jerilderie (A) Junee (A) Leeton (A) Lockhart (A) Murray (A) Murrumbidgee (A) Narrandera (A) Temora (A) Tumbarumba (A) Tumut (A) Urana (A) Wagga Wagga (C) Wakool (A) Wentworth (A) Windouran (A)
--------------------------	--

NOT APPLICABLE

Australian Capital Territory and South Eastern (SRs)	Australian Capital Territory Bega Valley (A) Bombala (A) Boorowa (A) Cooma–Monaro (A) Crookwell (A) Eurobodalla (A) Goulburn (C) Gunning (A) Harden (A) Mulwaree (A) Queanbeyan (C) Snowy River (A) Tallaganda (A) Yarrowlumia (A) Yass (A) Young (A)
---	---

APPENDIX REGIONS OF NSW AND ACT—MAPS

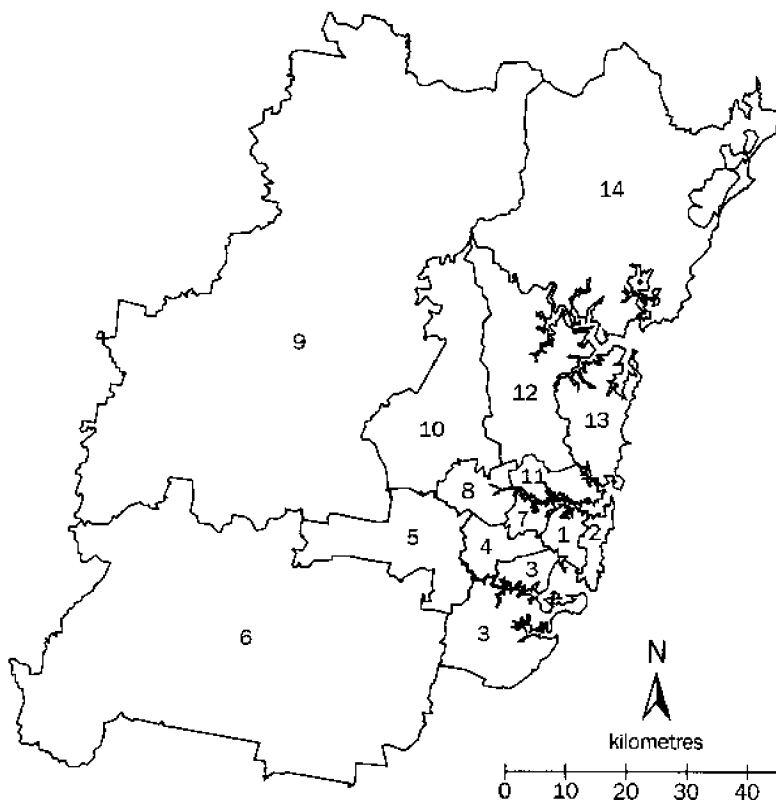
REGIONS OF NSW AND ACT



¹ Not published separately

² Excludes Far West (SD)

REGIONS OF SYDNEY (MSR)



1. Inner Sydney (SR)
2. Eastern Suburbs (SR)
3. St George-Sutherland (SR)
4. Canterbury-Bankstown (SR)
5. Fairfield-Liverpool (SR)
6. Outer South Western Sydney (SR)¹
7. Inner Western Sydney (SR) (a)
8. Central Western Sydney (SR)
9. Outer Western Sydney (SR)
10. Blacktown-Baulkham Hills (SR)
11. Lower Northern Sydney (SR)
12. Hornsby-Ku-ring-gai (SR)
13. Northern Beaches (SR)
14. Gosford-Wyong (SR)

¹ Not published separately

TECHNICAL NOTE DATA RELIABILITY

SOURCES OF ERROR

There are a number of possible sources of error in sample surveys and these can be classified into two types: sampling error; and non-sampling error.

NON-SAMPLING ERRORS

Non-sampling errors may arise as a result of errors in the reporting, recording or processing of the data and can occur even if there is a complete enumeration of the population. Non-sampling errors can be introduced through: inadequacies in the questionnaire; non-response; inaccurate reporting by respondents; errors in the application of survey procedures; incorrect recording of answers; and errors in data entry and processing.

It is difficult to measure the size of the non-sampling errors and the extent of these errors could vary considerably in significance from survey to survey, and from question to question. However, every effort is made in the design of the survey and development of survey procedures to minimise the effect of these errors.

SAMPLING ERRORS

Sampling error is the error which occurs by chance because the data were only obtained from a sample, not the entire population.

Standard errors of estimates

One measure of the variability of estimates which occurs as a result of surveying only a sample of the population is the standard error (SE). There are about two chances in three that a survey estimate is within one standard error of the figure that would have been obtained if all persons had been included and about 19 chances in 20 that it is within two standard errors. That is, there are 19 chances in 20 that the true estimate is in the range—

$$X - 2 \times SE(X) \text{ to } X + 2 \times SE(X)$$

(where X is the estimate)

The standard error of an estimate can be obtained from the tables on pages 62–64. Linear interpolation should be used to calculate the standard error of estimates falling between the sizes of estimates listed in the table (see example on page 61).

In the tables in this publication, only estimates with relative standard errors of 25% or less, and percentages based on such estimates, are considered sufficiently reliable for most purposes. However, estimates and percentages with larger relative standard errors have been included and are preceded by an asterisk (e.g. *3.4) to indicate they are subject to high standard errors and should be used with caution.

The standard error can also be expressed as a percentage of the estimate and this is known as the relative standard error (RSE). The RSE is determined by dividing the standard error of an estimate $SE(X)$ by the estimate X and expressing it as a percentage. That is—

$$RSE(X) = \frac{SE(X) \times 100}{X}$$

(where X is the estimate)

The look up list on the following page provides a guide for the calculation of standard errors and relative standard errors for a range of statistics.

TECHNICAL NOTE DATA RELIABILITY *continued*

CALCULATING STANDARD ERRORS

The methods described below refer to the calculation of standard errors for NSW estimates. Standard errors of ACT estimates should be calculated from the table on page 64, using column 2 (from September 1992) instead of the table on page 62, and column 3 (Monthly movements for December 1992–January 1993 onwards) instead of the table on page 63.

<i>MEASURE OF RELIABILITY TO BE DETERMINED</i>	<i>METHOD</i>
Standard errors of estimates of employed persons.	Determine the SE from the table on page 62 directly.
Standard errors of estimates of unemployed persons.	Multiply the SE from the table on page 62 by 1.06.
Standard errors of estimates of persons not in the labour force.	Multiply the SE from the table on page 62 by 1.1.
Standard errors of rates (e.g. the unemployment rate which is based on the number of unemployed persons expressed as a percentage of the number of persons in the labour force).	Determine the RSE of the numerator (<i>X</i>) and the denominator (<i>Y</i>) then apply the following formula: $RSE\left(\frac{X}{Y}\right) = \sqrt{[RSE(X)]^2 - [RSE(Y)]^2}$
Standard error of average duration of unemployment.	Determine the RSE for the number of persons on which the average is based and multiply this by 1.3.
Standard error of median duration of unemployment.	Determine the RSE for the number of persons on which the average is based and multiply this by 2.0.
Standard error of monthly movements.	From the table on page 63, look up the SE of the larger estimate.
Standard error of quarterly movements.	Determine the standard error of the larger estimate from the table on page 62 and multiply this by 1.11.
Standard error of annual movements.	Determine the standard error of the larger estimate from the table on page 62 and multiply this by 1.3.

LINEAR INTERPOLATION

Linear interpolation is used to determine the standard error of an estimate which falls between two values listed in the size of estimate column in the tables on page 62 or 63. Linear interpolation is best described using an example. In August 1997, there were 656,200 (X_e) employed persons working part-time in NSW. This estimate falls between the values 500,000 (X_l) and 1,000,000 (X_u) in the table on page 62.

The standard error of the estimate is determined as follows. Firstly calculate

$$\begin{aligned}
 F &= \frac{X_e - X_l}{X_u - X_l} \\
 &= \frac{656,200 - 500,000}{1,000,000 - 500,000} \\
 &= 0.31
 \end{aligned}$$

Secondly, calculate the standard error of the estimate, $SE(X_e)$ thus:

$$\begin{aligned}
 SE(X_e) &= SE(X_l) + \left(F \times [SE(X_u) - SE(X_l)] \right) \\
 &= 8,800 + (0.31 \times [11,300 - 8,800]) \\
 &= 9,575
 \end{aligned}$$

Therefore the standard error of the number of employed persons in August 1997 working part-time in NSW (656,200) is 9,575.

STANDARD ERRORS LEVEL ESTIMATES (a) — NSW

REGIONS IN SYDNEY (MSR)

Size of estimate	NSW; Sydney (MSR); Balance of NSW (MSR)	Inner Sydney and Inner Western Sydney (SRs)	Inner Sydney (SR)	Eastern Suburbs (SR)	St George- Sutherland (SR)	Canterbury- Bankstown (SR)	Fairfield- Liverpool and Outer South Western Sydney (SRs)	Fairfield- Liverpool (SR)
	500	420	340	330	300	300	280	330
1 000	590	500	480	430	430	410	470	410
3 000	1 000	890	860	770	780	740	850	750
5 000	1 300	1 150	1 150	1 000	1 050	970	1 100	980
10 000	1 750	1 700	1 650	1 500	1 500	1 400	1 650	1 450
20 000	2 400	2 450	2 450	2 200	2 200	2 100	2 350	2 100
50 000	3 550	4 050	4 050	3 650	3 700	3 500	3 850	3 500
100 000	4 750	5 900	6 000	5 400	5 500	5 200	5 600	5 200
200 000	6 200	8 600	8 900	8 000	8 100	7 700	8 200	7 700
300 000	7 300	10 700	11 300	10 100	10 200	9 700	10 200	9 800
500 000	8 800	14 200	15 200	13 600	13 800	13 000	13 500	13 100
1 000 000	11 300							
2 000 000	14 300							
5 000 000	19 300							

REGIONS IN SYDNEY (MSR) continued

Size of estimate	Central Western Sydney (SR)	Outer Western Sydney (SR)	Blacktown- Baulkham Hills (SR)	Lower Northern Sydney (SR)	Hornsby- Ku-ring-gai (SR)	Northern Beaches (SR)	Gosford- Wyong (SR)
500	300	310	270	360	320	250	330
1 000	440	450	390	520	460	360	470
3 000	790	820	700	940	830	650	850
5 000	1 050	1 100	920	1 250	1 100	860	1 150
10 000	1 500	1 550	1 350	1 800	1 600	1 250	1 650
20 000	2 250	2 300	1 950	2 650	2 350	1 850	2 400
50 000	3 750	3 850	3 300	4 450	3 900	3 100	4 050
100 000	5 500	5 700	4 850	6 500	5 800	4 550	6 000
200 000	8 200	8 500	7 200	9 700	8 600	6 800	8 900
300 000	10 300	10 700	9 100	12 300	10 900	8 500	11 200

REGIONS IN BALANCE OF NSW (MSR)

Size of estimate	Hunter (SR)	Newcastle (SRS)	Illawarra and South Eastern (SRs)	Illawarra (SR)	Wollongong (SRS)	Richmond- Tweed and Mid-North Coast (SRs)	Northern, Far West- North Western and Central West (SRs)	Murray- Murrumbidgee (SR)
			500			350	330	
1 000	500	480	480	450	390	530	520	520
3 000	900	870	870	810	710	950	940	940
5 000	1 200	1 150	1 150	1 050	940	1 250	1 250	1 250
10 000	1 700	1 650	1 650	1 550	1 350	1 850	1 800	1 800
20 000	2 500	2 450	2 400	2 250	2 000	2 700	2 650	2 650
50 000	4 100	4 100	3 950	3 700	3 350	4 500	4 450	4 400
100 000	6 000	6 000	5 700	5 400	4 950	6 600	6 600	6 500
200 000	8 700	9 000	8 400	7 800	7 300	9 900	9 800	9 700
300 000	10 900	11 300	10 400	9 800	9 300	12 400	12 300	12 300

(a) Standard errors of estimates from September 1992. For standard errors for earlier periods, see previous issues of this publication.

STANDARD ERRORS MOVEMENT ESTIMATES (a) — NSW

REGIONS IN SYDNEY (MSR).....

Size of estimate	NSW; Sydney (MSR);	Inner Sydney and Inner Western Sydney (SRs)	Inner Sydney (SR)	Eastern Suburbs (SR)	St George- Sutherland (SR)	Canterbury- Bankstown (SR)	Fairfield- Liverpool and Outer South Western Sydney (SRs)	Fairfield- Liverpool (SR)
	Balance of NSW (MSR)							
500	540	330	270	260	240	240	290	220
1 000	690	440	360	350	330	330	390	300
3 000	1 050	700	600	580	540	540	630	500
5 000	1 250	870	750	730	680	680	780	630
10 000	1 600	1 150	1 050	990	930	930	1 050	860
20 000	2 050	1 550	1 400	1 350	1 250	1 250	1 400	1 150
50 000	2 900	2 300	2 150	2 050	1 950	1 900	2 050	1 750
100 000	3 700	3 100	2 900	2 800	2 650	2 650	2 800	2 400
200 000	4 750	4 200	4 000	3 850	3 600	3 600	3 750	3 300
300 000	5 500	5 000	4 800	4 600	4 350	4 300	4 400	4 400
500 000	6 700	6 200	6 000	5 800	5 400	5 400	5 500	5 000
1 000 000	8 600							
2 000 000	11 100							
5 000 000	15 500							

REGIONS IN SYDNEY (MSR) continued.....

Size of estimate	Central Western Sydney (SR)	Outer Western Sydney (SR)	Blacktown- Baulkham Hills (SR)	Lower Northern Sydney (SR)	Hornsby- Ku-ring-gai (SR)	Northern Beaches (SR)	Gosford- Wyong (SR)
	500	220	240	250	290	230	210
1 000	300	330	340	400	310	280	380
3 000	490	540	560	660	510	470	620
5 000	610	680	700	830	640	590	780
10 000	840	940	960	1 150	870	800	1 050
20 000	1 150	1 300	1 300	1 550	1 200	1 100	1 450
50 000	1 750	1 950	2 000	2 350	1 800	1 650	2 200
100 000	2 350	2 650	2 700	3 200	2 450	2 250	3 000
200 000	3 250	3 600	3 700	4 400	3 400	3 100	4 100
300 000	3 900	4 350	4 450	5 300	4 050	3 750	4 950

REGIONS IN BALANCE OF NSW (MSR).....

Size of estimate	Hunter (SR)	Newcastle (SRS)	Illawarra and South Eastern (SRs)	Illawarra (SR)	Wollongong (SRS)	Richmond- Tweed and Mid-North Coast (SRs)	Northern, Far West- North Western and Central West (SRs)	Murray- Murrumbidgee (SR)
	500	320	280	340	340	260	300	340
1 000	430	390	460	460	350	420	470	400
3 000	690	640	740	730	580	680	760	660
5 000	860	800	910	910	730	860	960	830
10 000	1 150	1 100	1 250	1 200	990	1 200	1 300	1 150
20 000	1 550	1 500	1 650	1 650	1 350	1 600	1 800	1 550
50 000	2 300	2 250	2 450	2 400	2 050	2 450	2 750	2 350
100 000	3 100	3 100	3 250	3 250	2 800	3 350	3 750	3 200
200 000	4 150	4 250	4 400	4 350	3 850	4 550	5 100	4 350
300 000	4 900	5 100	5 200	5 200	4 600	5 500	6 100	5 200

(a) Standard errors of month to month movements from December 1992-January 1993 onwards. For standard errors for earlier periods, see previous issues of this publication.

STANDARD ERRORS Level & movement estimates(a) — ACT

Size of estimate	Monthly movements	
	From September 1992 (a)	for December 1992–January 1993 onwards (a)
500	180	150
1 000	240	220
3 000	390	320
5 000	490	390
10 000	640	500
20 000	840	640
50 000	1 200	900
100 000	1 550	1 150
200 000	1 950	1 500
300 000	2 250	1 750

(a) For standard errors for earlier periods, see *Labour Force, Australia* (Cat. no. 6203.0).







For more information . . .

The ABS publishes a wide range of statistics and other information on Australia's economic and social conditions. Details of what is available in various publications and other products can be found in the ABS Catalogue of Publications and Products available from all ABS Offices.

ABS Products and Services

Many standard products are available from ABS bookshops located in each State and Territory. In addition to these products, information tailored to the needs of clients can be obtained on a wide range of media by contacting your nearest ABS Office. The ABS also provides a Subscription Service for standard products and some tailored information services.

National Dial-a-Statistic Line

0055 86 400

Steadycom P/L: premium rate 25c/20 secs.

This number gives 24-hour access, 365 days a year, for a range of important economic statistics including the CPI.

Internet

<http://www.abs.gov.au>

A wide range of ABS information is available via the Internet, with basic statistics available for each State, Territory and Australia. We also have Key National Indicators, ABS product release details and other information of general interest.

Sales and Inquiries

client.services@abs.gov.au

National Mail Order Service (06) 252 5249
Subscription Service 1300 366 323

	Information Inquiries	Bookshop Sales
SYDNEY	(02) 9268 4611	(02) 9268 4620
MELBOURNE	(03) 9615 7755	(03) 9615 7755
BRISBANE	(07) 3222 6351	(07) 3222 6350
PERTH	(08) 9360 5140	(08) 9360 5307
ADELAIDE	(08) 8237 7100	(08) 8237 7582
CANBERRA	(02) 6252 6627	(02) 6207 0326
HOBART	(03) 6222 5800	(03) 6222 5800
DARWIN	(08) 8943 2111	(08) 8943 2111



Client Services, ABS, PO Box 10, Belconnen ACT 2616

Produced by the Australian Government Publishing Service
© Commonwealth of Australia 1997

Recommended retail price: \$21.00



2620110008970

ISSN 1322-0179